



# ProtaDetails 2026

## Basic Training Guide

Version 1.0

May 2025

Please contact us for your training and technical support queries

[asiassupport@protasoftware.com](mailto:asiassupport@protasoftware.com) | [globalsupport@protasoftware.com](mailto:globalsupport@protasoftware.com)

Publisher



**Limitation of Responsibilities**

Prota shall not be held responsible for any losses caused by documentation, software, or usage errors.

In addition to Prota License Agreement Terms, it is the responsibility of the user

- to check of results generated by documentation and software,
- make sure that the users of the software and their supervisors have adequate technical capabilities,
- make sure that the software is used correctly per the reference manual and documentation,

**Intellectual Property**

ProtaStructure is a registered trademark of **Prota Software Inc.**, and all intellectual property rights belong to **Prota Software Inc.** Documentation, training, and reference manuals. Any program component can not be copied, distributed, and used in violation of the license agreement.

**Trademarks**

**ProtaStructure®**, **ProtaDetails®**, **ProtaSteel®** ve **ProtaBIM®** are registered trademarks of Prota Software Inc. Prota logo is a trademark of Prota Software Inc.

# Table of Content-s

- Introduction ..... 5
- Opening a ProtaDetails Project..... 5
- User Interface ..... 6
- Draw All Model Details ..... 9
- Creating Plan/ Layout Detail ..... 10
- RC Slab Cross Sections with Reinforcement Detailing ..... 12
- Creating Column & Wall Schedules ..... 13
- Creating Column Elevation Details..... 14
- Creating Column Application Plans..... 17
- Creating Beam Elevation Details..... 18
  - Inserting Beam Details by Axes ..... 20
  - Inserting Beam Details One by One ..... 21
- Search a Member Detail or Text ..... 21
  - How To Use Search in the Tree view: ..... 21
  - How To Use Text Search: ..... 22
- Drawings ..... 22
- Drawing Management ..... 23
- Dimension Styles Interface ..... 23
- Multiple Selection of Tables for Report Generation ..... 24
- Creating Staircase Elevation Details..... 25
  - Inserting Staircase Details One by One ..... 27
- Search a Member Detail or Text ..... 27
  - How To Use Search in the Tree view: ..... 27
- Adding Complete Building Section to Formwork Plans..... 28
- Drawings ..... 29
- Drawing Management ..... 30
- Dimension Styles Interface ..... 30
- Multiple Selection of Tables for Report Generation ..... 31
- Engineering Design Libraries..... 32
  - Cantilever Retaining Wall..... 33
  - Pile Cap ..... 34
  - Pile Design ..... 35
  - Stairs Design ..... 36

Pool Design .....	37
Engineering Utilities for quick engineering design & calculation .....	38
Closing Summary .....	40
Thank You .....	41

## Introduction

Thank you for choosing **ProtaDetails** – a revolutionary automated detailing, drawing management & structural component design program which enables you to:

- Create automatic detail and general arrangement drawings from **ProtaStructure** models
- Produce quantity take-off and reinforcement schedules
- Sheet management using multiple files
- Create and modify structural details rapidly with intelligent objects & templates
- Run component design and detailing – such as Retaining wall, Pile cap, Stair, etc.
- Output to latest versions of industry-standard CAD formats in DWG & DXF

This Quick Start Guide aims to get you up and running quickly. The focus will be on creating automated member and plan drawings. You should be able to learn the fundamental features of **ProtaDetails** in around half an hour.

## Opening a ProtaDetails Project

In ProtaStructure Quick Start Guide, we have analyzed and designed a simple model. We will open the same model in ProtaDetails to produce all the reinforcement details and general arrangement drawings.

### Launch ProtaDetails from ProtaStructure interface:

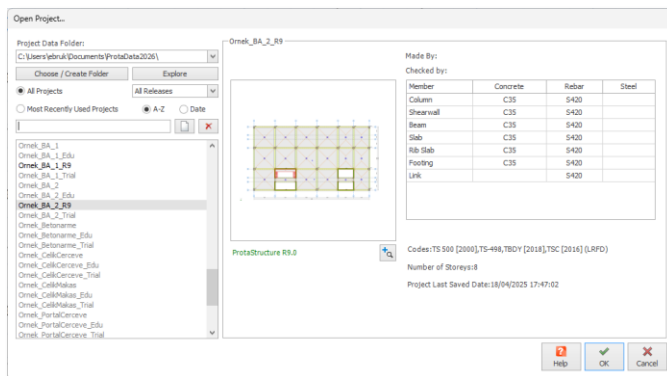
- In ProtaStructure, ensure the sample basic training model is opened.
- Go to the Drawings & Reports tab → Click ProtaDetails



ProtaDetails will launch as a separate program. You may close ProtaStructure.

### Launch ProtaDetails directly from desktop

- Launch **ProtaDetails 2026** on your desktop
- The Open Project dialog will appear (This is identical to ProtaStructure open project dialog)



- Under the Project Data Folder, pick **Choose / Create Folder**

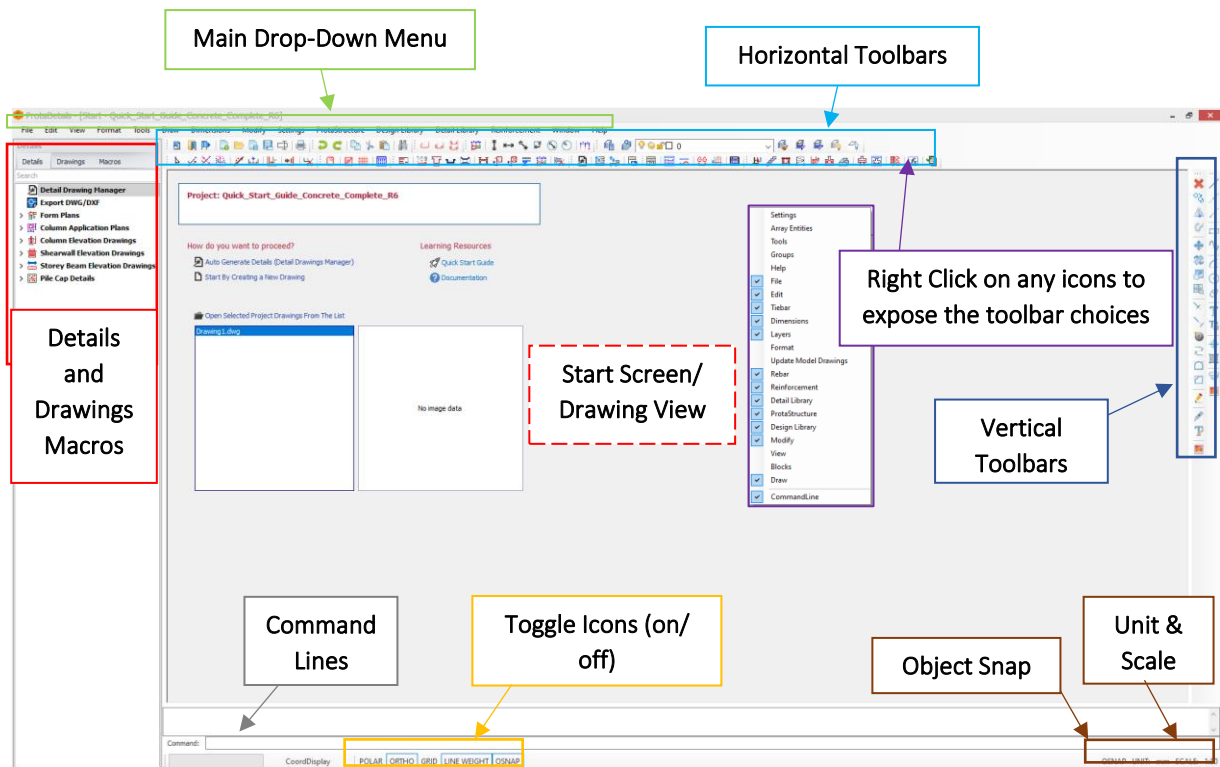
- Select the same Data Folder where the 'Quick\_Start\_Model...' you have saved the model.
- Select the project and click **OK**

If you want to open the sample completed model, choose the default **ProtaData2026** folder as a data folder and open **"Quick\_Start\_Guide\_Concrete\_Complete"**.

Users are always encouraged to launch ProtaDetails from ProtaStructure, so the detail drawings will always be generated based on the latest design in ProtaStructure.

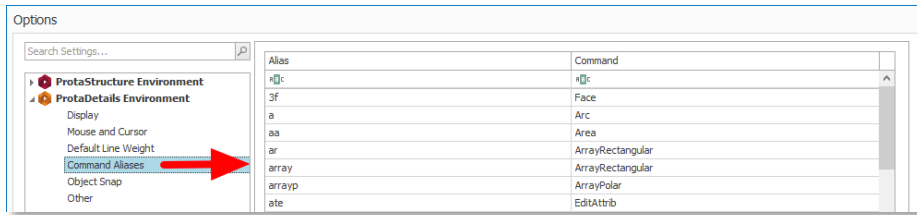
## User Interface

The main components and toolbars of the **ProtaDetails** user interface are below.



The shortcut toolbars are automatically laid out according to your screen size and resolution.

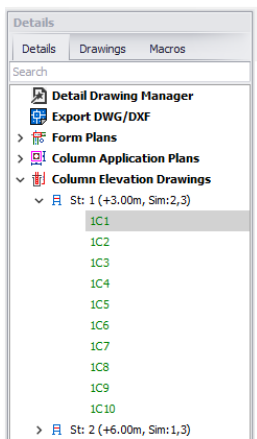
- All commands can be run from the main drop-down menu.
- Shortcut toolbars can be re-positions by simply clicking, drag & dock to the final position.
- Right-clicking on any command will expose the toolbar's choices (you can on / off).
- You can type in the command directly in the command box at the bottom. Command shortcuts can be set via **Settings → Settings and Parameters → ProtaDetails Environment → Options → Command Aliases**



When a new project is opened, the **Start Screen** will appear with the following options:

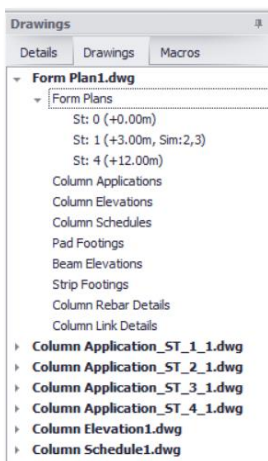
- **Auto Generate Details (Detail Drawing Manager)** – Automated batch generation of all reinforcement details of reinforced concrete members and general arrangement drawings
- **Start By Creating a New Drawing** – Open up a new blank drawing with file name Drawing1.dwg
- **Open Project Drawing from the list** – Open previously generated & saved project drawings

### Details Tab

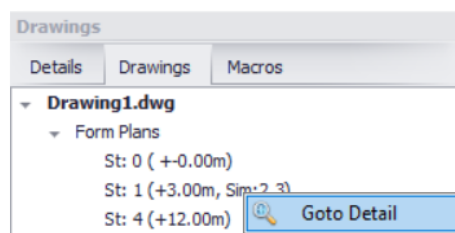


- The **Details** tab lists & organizes all the possible structure details, e.g., Form Plans (layout) that can be produced.
- Clicking on the triangle icon preceding the text will expand the list to expose more details.
- ✓ A tick means that particular detail has been inserted in a drawing
- **Green** colored member labels indicate the member is successfully designed (**Red** = Fail & **Amber** = Analysis out of date)
- This allows you to easily keep track of and manage details in an efficient manner.

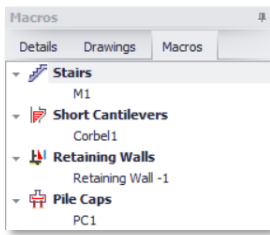
### Drawings Tab



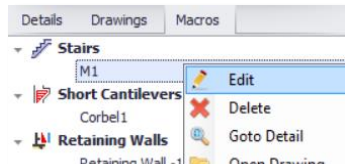
- The **Drawing** tab list & organizes all drawings (dwg) files that has been created & what details the drawings contain.
- Once a particular drawing has been created & details inserted, it will be added in the list. Clicking on the triangle icon preceding the main folder will expose more details.
- This allows you to easily keep track of and manage drawings in an efficient manner.
- If you right-click on a drawing detail, there is option to **“Goto Detail”** which will locate and zoom in to that detail.



**Macro Tab**



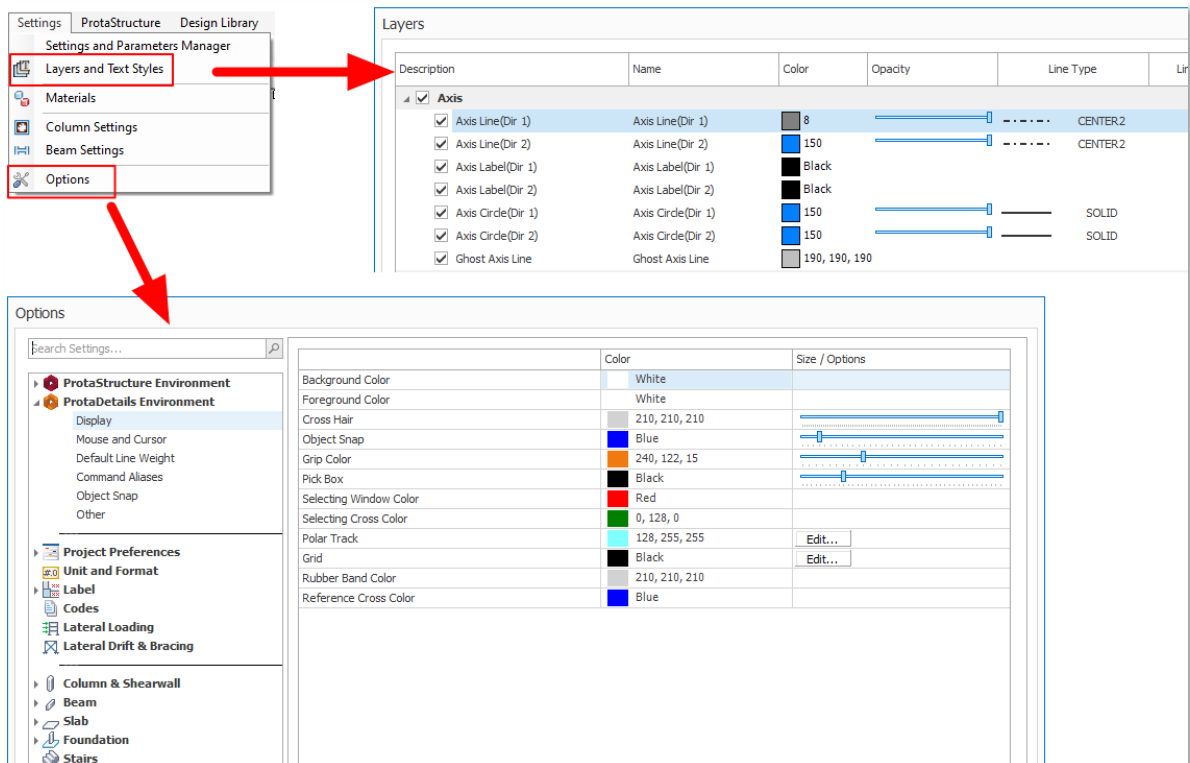
- The **Macros** tab lists all the engineering design macros that have been used & created.
- If you right-click on a macro, there are additional options to **Edit**, **Delete**, **Goto Detail** & **Open Drawing** directly.



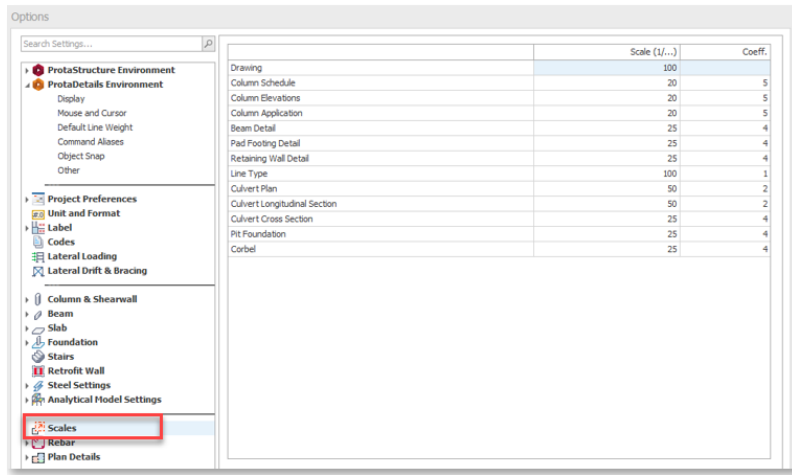
**Setting Tab**

Before creating any drawings, it is recommended that you review **Settings** (top menu) such as **Layers** first, as this directly affects the final output. The layers, materials, member settings are now inherited from the ProtaStructure model.

**Settings** (top menu) → **Options** contains many other settings such as **Display**.



Click on the triangle to expose more options. Click on **Scales** to examine all the default scales used.

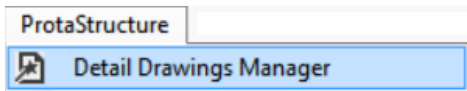


You may change any of the settings before creating the details. Settings saved in **ProtaDetails** will automatically apply to the same project in **ProtaStructure** (as both share the same project files).

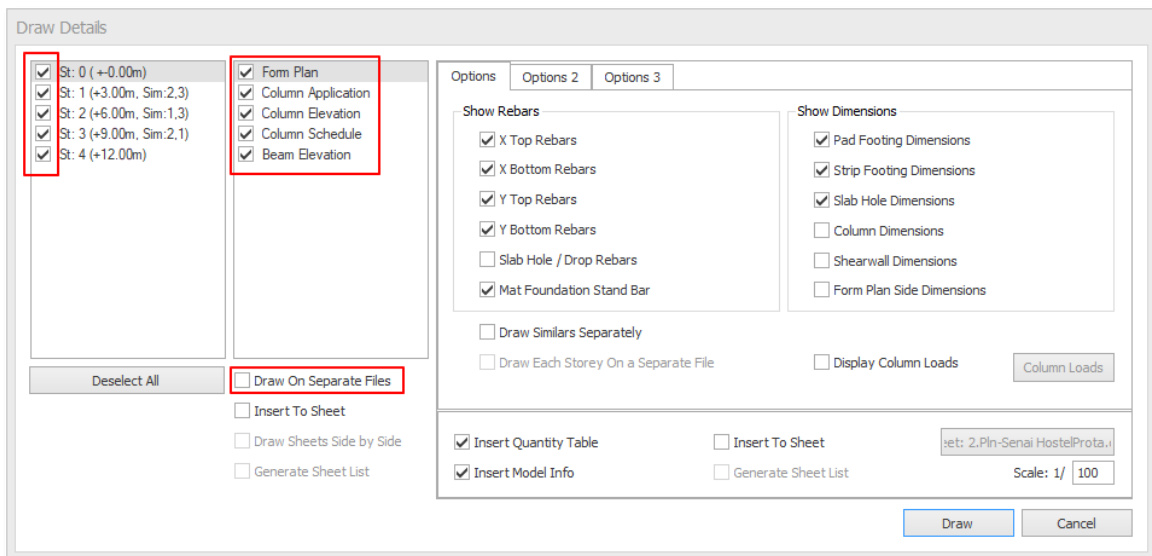
## Draw All Model Details

The quickest way to create all the details in one go is to use the **Auto Generate Details** function in the **Start Screen**.

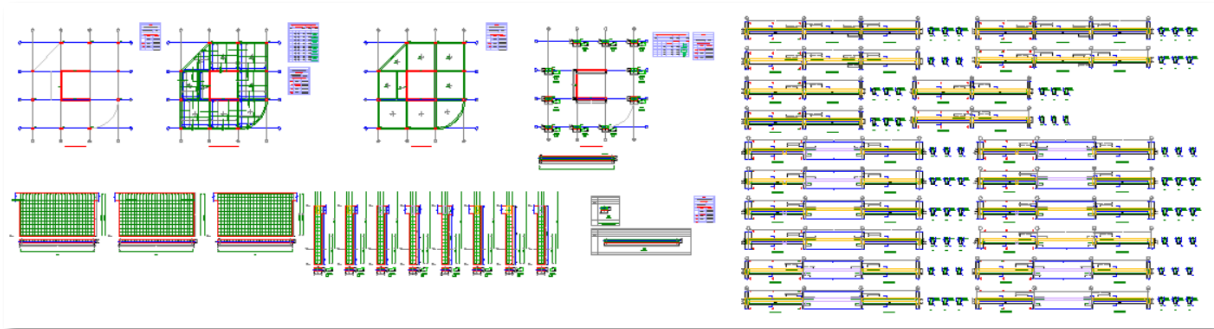
- Alternatively, go to **ProtaStructure (top menu) → Details Drawings Manager**



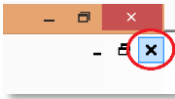
A dialog will appear, giving you options to include or exclude the various details. Each detail has further options when it is selected.



- Choose the details you want to produce by checking on the various options
- Uncheck Draw on Separate Files (so all details are inserted into a single drawing file)
- Click Draw & all the details, including the plan drawings, will be created



- Close the drawing file by clicking on the x icon of the drawing



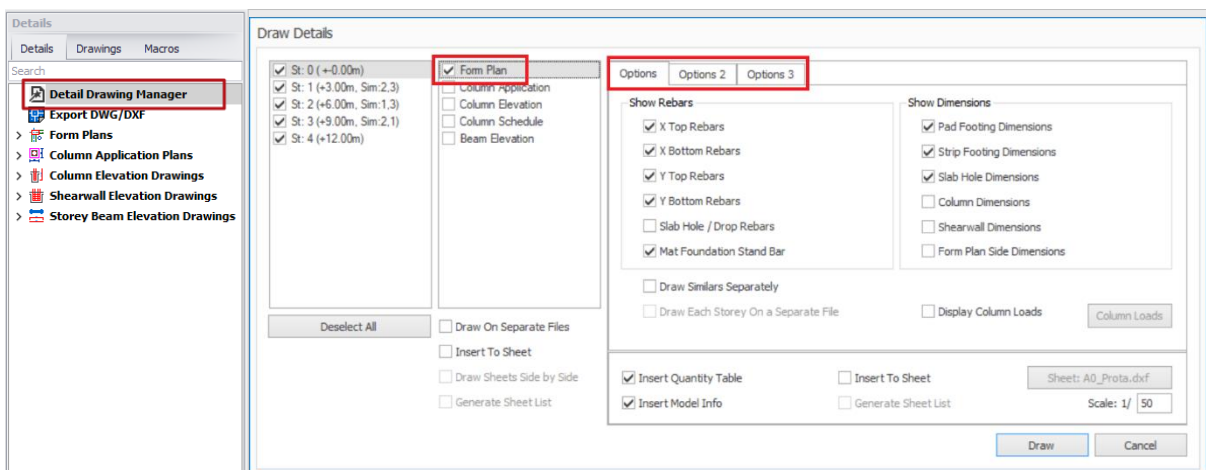
- When prompted to save, pick **NO**

While this method is the quickest way to insert all the details, it may not be suitable in an actual project to insert all the details into a single drawing. The following sections will insert various details into different drawing files to demonstrate how details and drawings can be managed systematically.

## Creating Plan/ Layout Detail

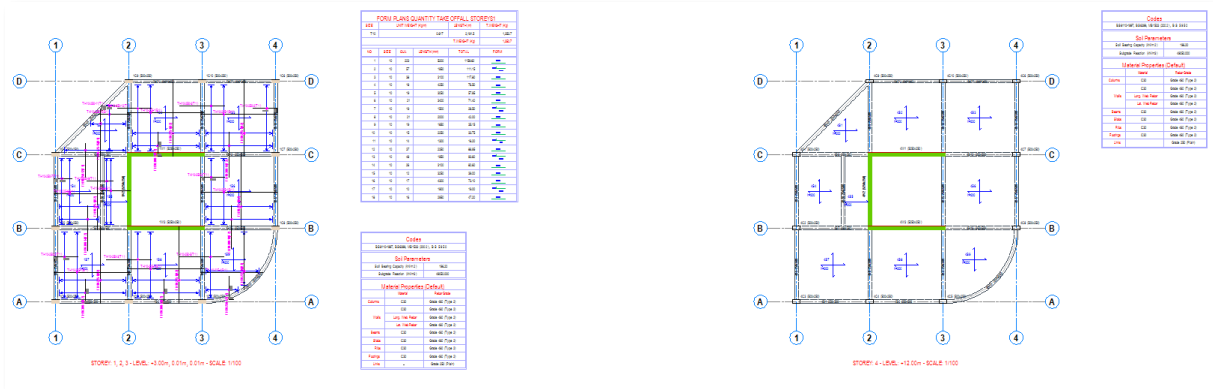
We will now create the plan details of the project and insert them in a new drawing.

- Go to **File** (top main menu) → **New Drawing** to start a new drawing.
- Double-click on **Detail Drawing Manager** at the top of the **Details** tab.



A dialog showing options to show slab reinforcement bars, member dimensions & hatching columns will be shown. Foundation plan showing raft, footing & pile caps (if any) will be shown in St:0

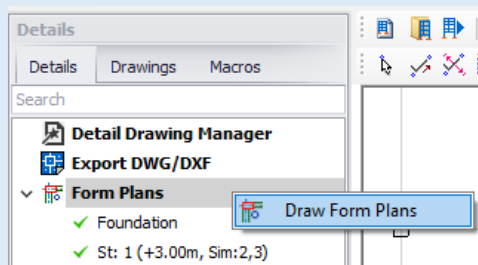
- Ensure that **all Storeys & Form Plan** are selected (deselect all other drawings)  
You can select or deselect multiple objects by holding down the **CTRL** key & left click continually.
- Go to **Options 2 & 3** tabs and review all the additional settings → **Draw**
- Click anywhere in the drawing to insert the floor plan detail.



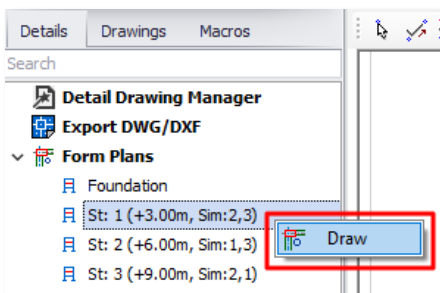
- Go to **File** (top main menu) → **Save Drawing As**
- Change the **File Name** to **'Plan Layout'** and then click **OK**

**Alternatively, form plans can be inserted by:**

- Right-click the **Form Plans**
- Select **Draw Form Plans**



**To insert the plan detail of a particular storey:**



- Expand the **Form Plans** by clicking on the triangle icon
- Click **St:1** to select it → **Right-click** to expose context menu → select **Draw**
- Click on a location in the drawing to place it

The **green** tick ✓ next to the storey indicates the detail has been inserted in a drawing. 2 nos. of green ticks indicate the detail has been inserted twice.

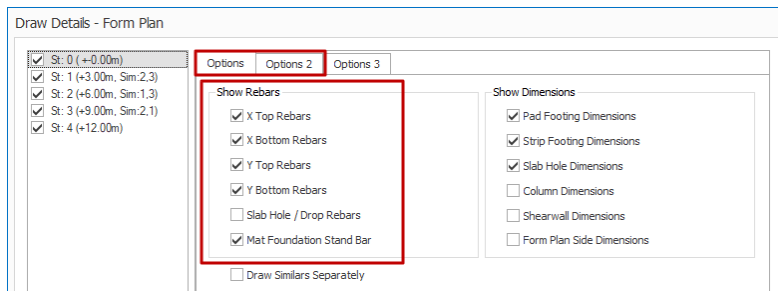
## RC Slab Cross Sections with Reinforcement Detailing

A reinforced slab cross-section can be created with reinforcement detailing. In **ProtaDetails**, cut sections anywhere along the layout plan drawing and position them within the drawing sheet.

- Firstly, the slab reinforcements must be shown on the plan layout.

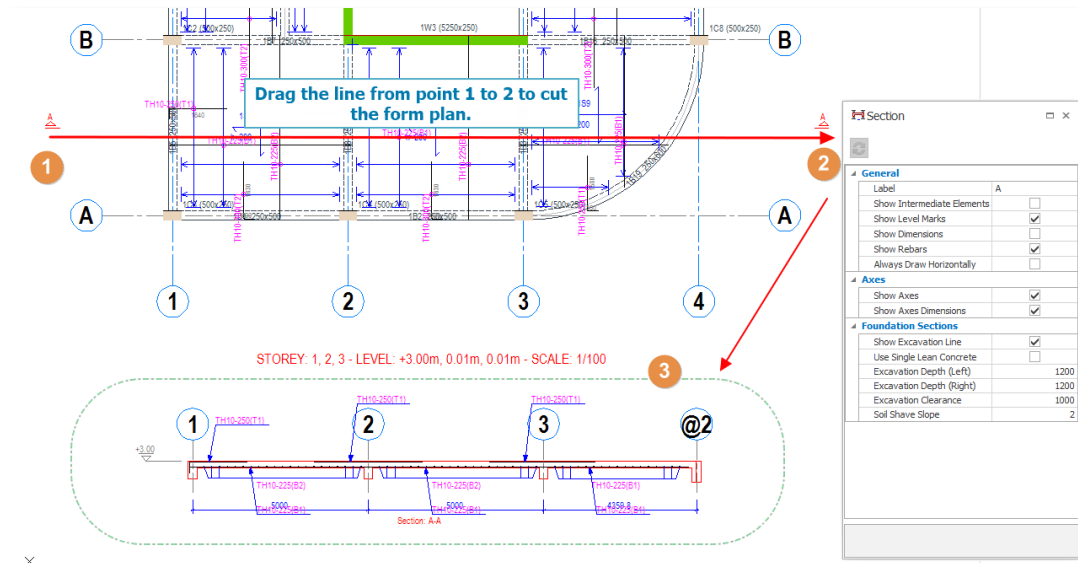
Please ensure that all slabs reinforcement has been designed using slab strips in ProtaStructure.

- Go to the **Drawings & Reports** tab → Launch **ProtaDetails**
- In **ProtaDetails**, generate the **Form Plan** drawing ensuring options to **Show Rebars** are checked.



More slab detailing options are available in the Options 2 tab.

- Go to **Detail Library** (top menu) → Pick **Plan Sections**
- Alternatively, in the **Command** line at the bottom, type **"FormSection."**
- In the **Section** dialog, input/ select the preferred options
- Draw a "section cut" line by clicking on 2 points on the plan view (refer to the steps shown in the figure below)



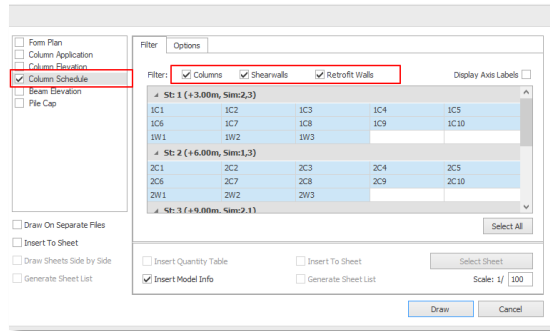
- Click on the desired location to place the section detail

Click **ORTHO** (orthogonal) icon at the bottom to ensure the line is exactly horizontal/vertical.

## Creating Column & Wall Schedules

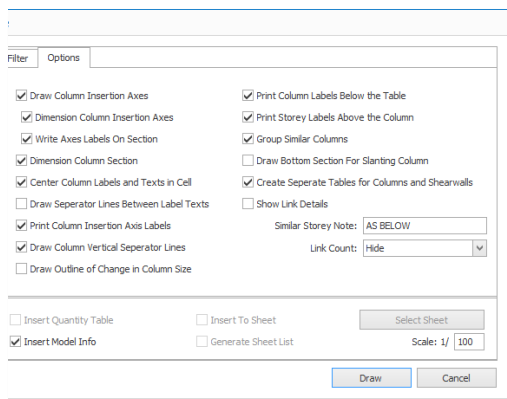
We will now produce the column/ wall schedules in a new drawing.

- Go to **File** (top main menu) → **New Drawing** to start a new drawing
- Right-click **Shear Wall Elevation Drawings** at the top of the **Details** tab and select **Draw Shear Wall Schedules**



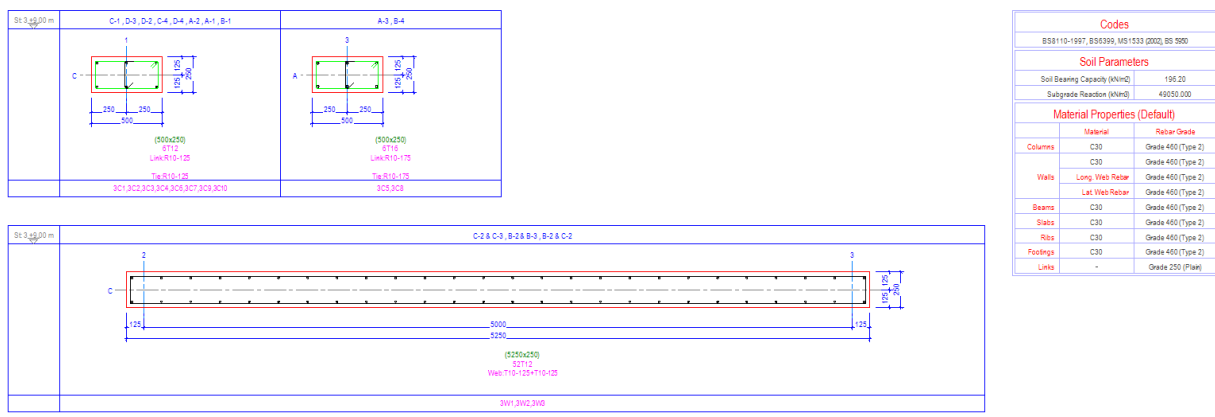
- Pick **Column Schedule** → **Filter** tab dialog allows you to choose which columns/walls to be included.  
By default, all columns of all storeys are selected.
- To re-choose particular columns/ walls, hold down the **CTRL** key and then pick individual columns & walls.
- You can also hold down the **SHIFT** key → Pick the first element → Pick the last element → all elements in between will be selected.
- Check **Shearwalls** to include shear walls too.
- Go to the **Options** tab.

The Options tab contains more settings that control the output & presentation of the drawing. The newer options are explained below:



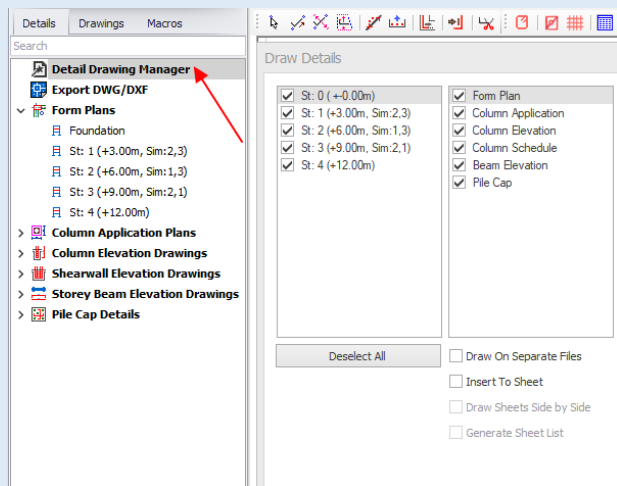
- **Group Similar Columns** – Columns with the same section size and rebars will be grouped together
- **Draw Bottom Section for Slanting Column** – Adds additional bottom section cut for slanting column
- **Draw Outline of Change in Column Size** – If the column changes sizes between storeys, the outline lower column will also be drawn.

➤ Click **Draw** & specify a point in the drawing to place it (as shown below).



**Alternative way to insert column schedule :**

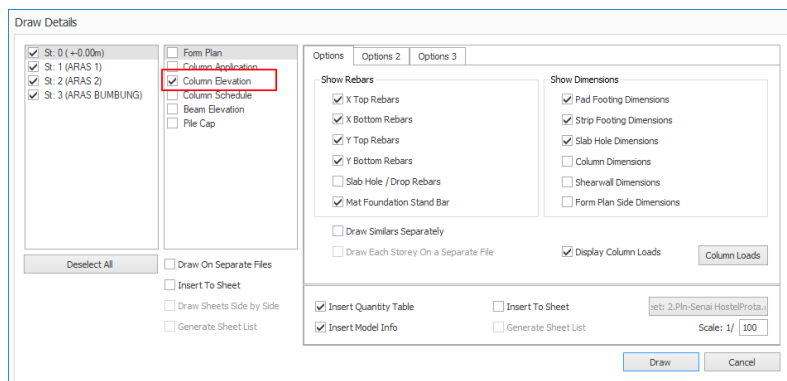
In **Details** tab (left pane), double-click on **Detail Drawing Manager** at the top of the Details tab. The same column schedule tab will appear.



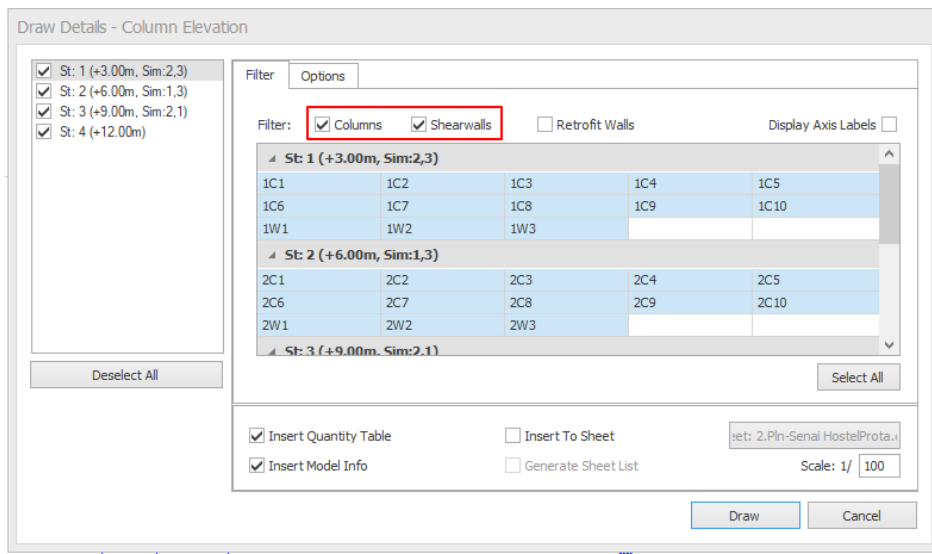
**Creating Column Elevation Details**

We will now insert the column elevation details in the same drawing.

➤ Double click on **Detail Drawing Manager** at the top of the Details tab.

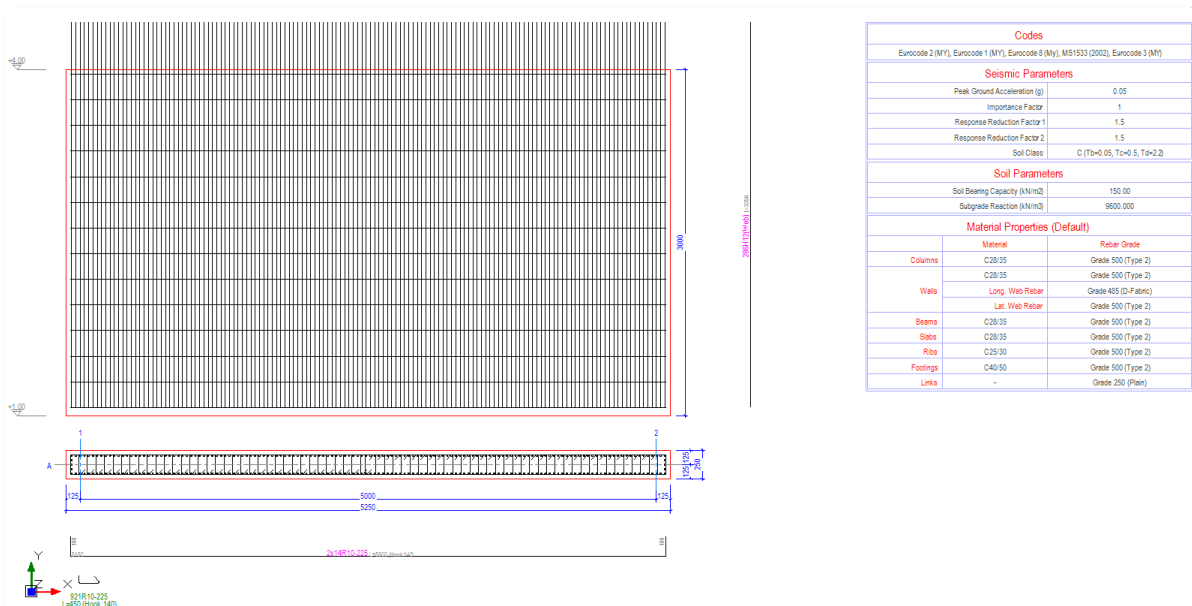


➤ Alternatively, right-click on **Column Elevation Drawings** → **Draw Column Elevations**



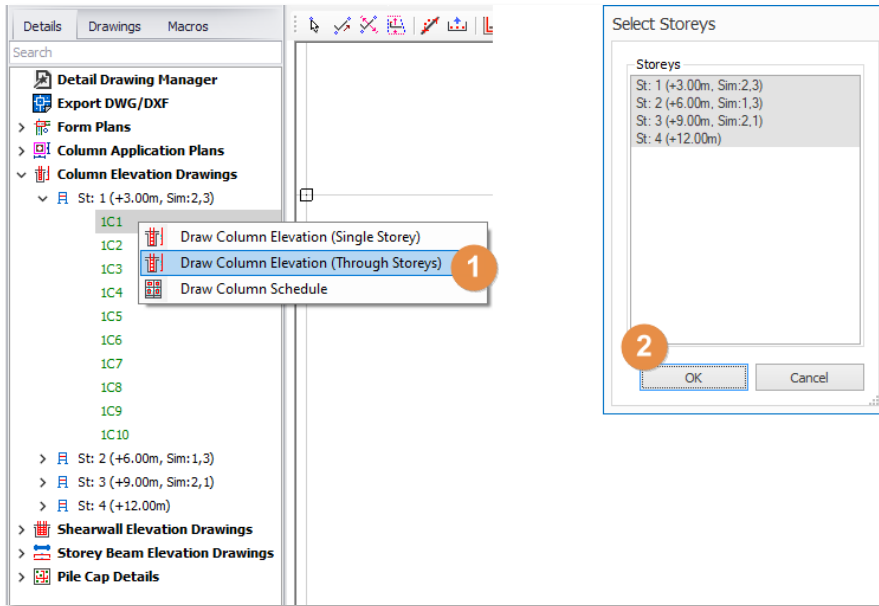
- In the Column Elevation dialog, check only **Column Elevation**
- Go to the **Options tab** to review more settings → **Draw**
- Specify a point in the drawing to place the detail

All the columns & wall elevation details and the quantity table will be created below.



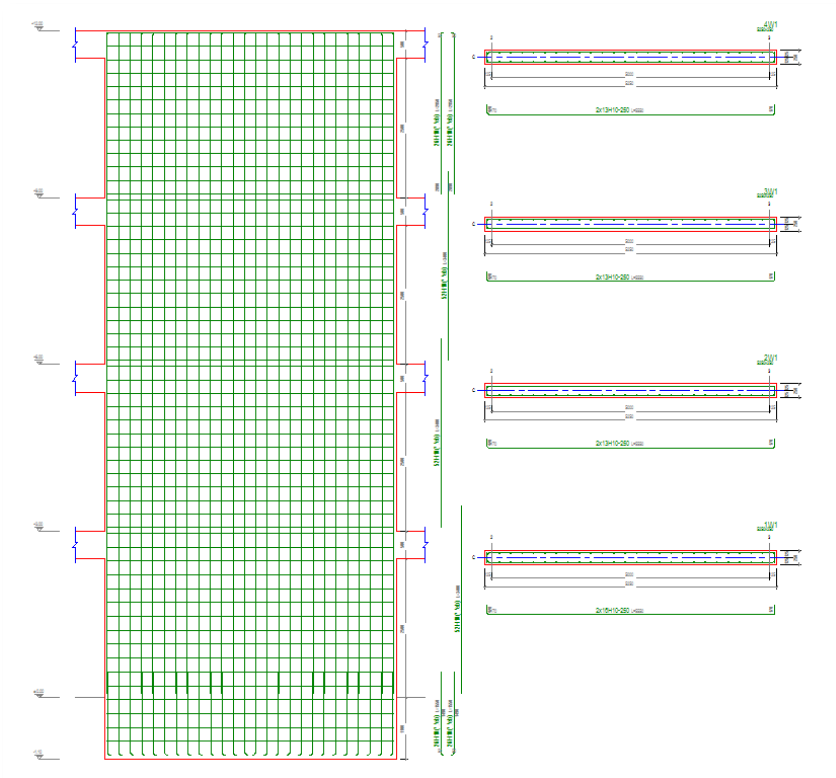
We will now insert the combined column elevation spanning multiple storeys.

- Expand **Column Elevation Drawings**
- Expand **ST: 1** → Select **1C1** or **GC1**
- Right-click → **Draw Column Elevation (Through Storeys)**



Note that individual column elevation and schedules options are available in the menu.

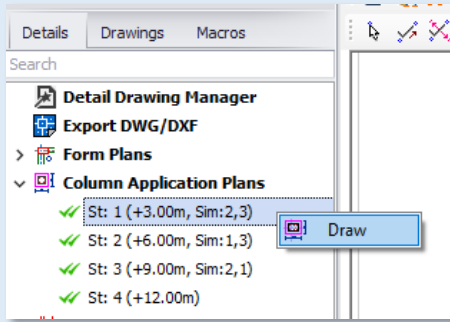
- In the **Select Storey** dialog, ensure all Storeys is selected → **OK**
- Specify a point in the drawing to place the detail.
- Expand **Shearwall Elevation Drawings**
- Expand **ST: 1** → Select **1W1** or **GW1**
- Repeat the same steps to insert the detail for the wall (as shown below)



- Go to **File** (top main menu) → **Save Drawing**
- Change the File Name to '**Column Schedule & Elevation**' and then click **OK**



If you would like to insert column application plan of a particular storey:

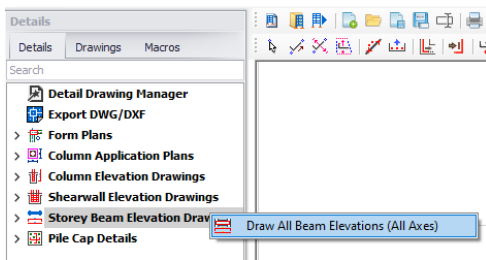


- Expand *Column Application Plans*
- Select a particular *Storey*
- Right click on the storey → *Draw*

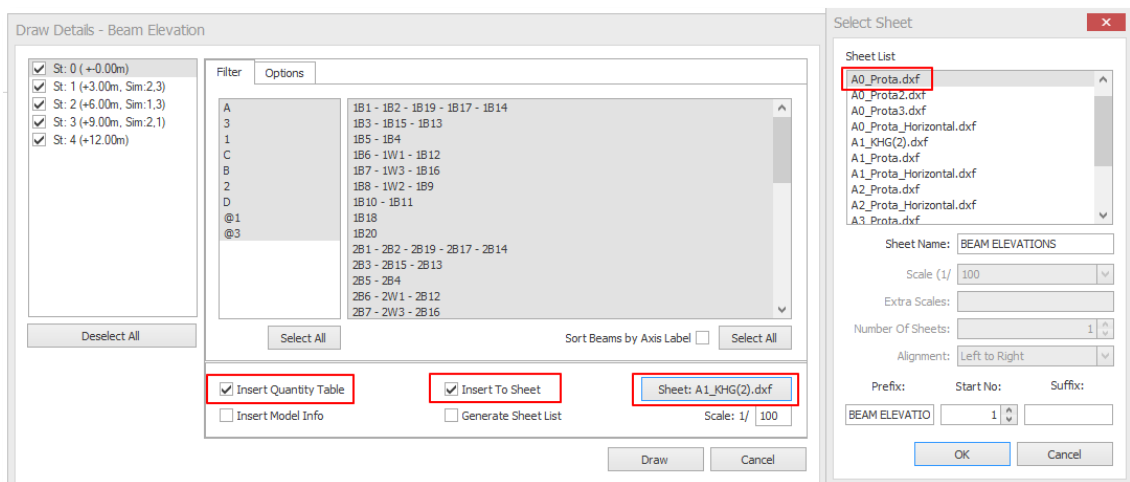
## Creating Beam Elevation Details

We will now insert the beam elevation details in a new drawing.

- Go to *File* (top main menu) → *New Drawing* to start a new drawing

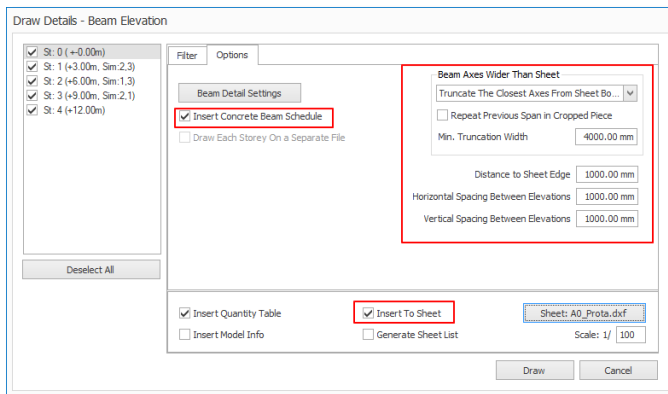


- In the *Details* tab, → right-click on *Storey Beam Elevation Drawings*
- Pick *Draw All Beam Elevations (all Axes)*

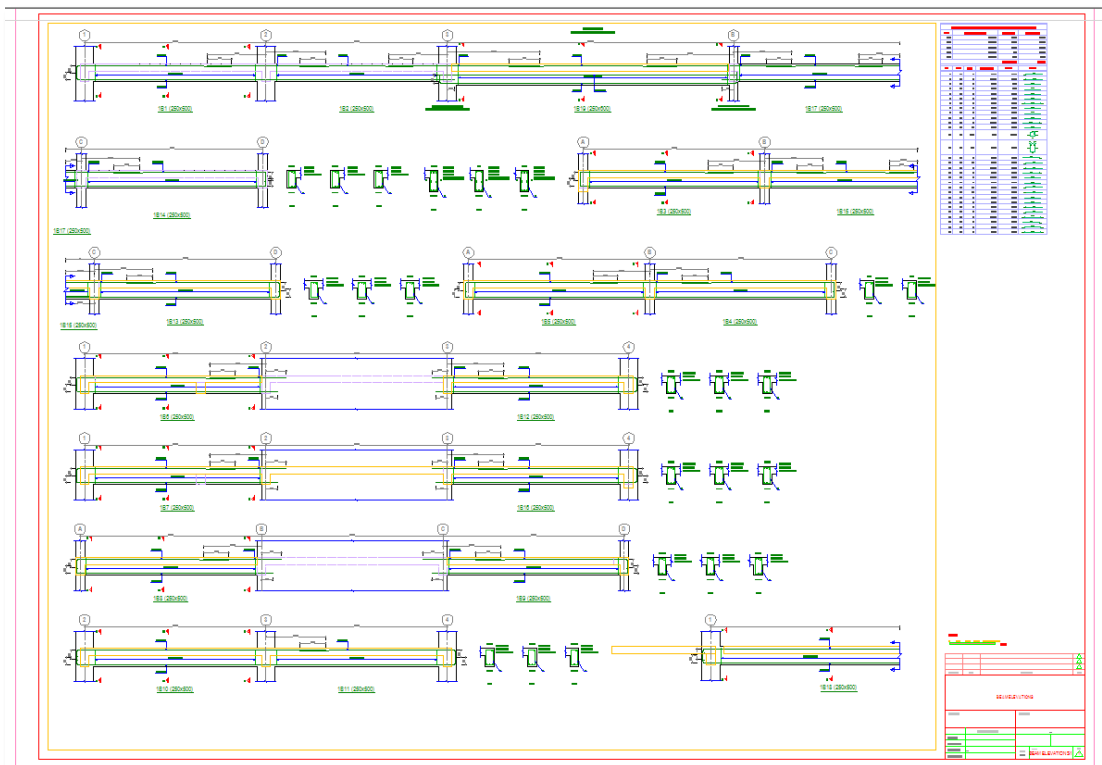


- Check the option *Insert Quantity Table* to insert the rebar quantity table in detail.
- Check *Insert to Sheet* → Pick Sheet → Choose '*A0\_Prota.dxf*' in the Sheet list

- You can save your sheet in *C:\Users\User]\Documents\ProtaLib\Sheets*.  
By default, beams wider than the sheet will be auto truncated from the sheet border.
- Go to the **Options** tab



- Pick how to truncate under *Beam Axes Wider Than Sheet* by selecting from the drop-down:
  - Don't Truncate – even if beams details are out of sheet border
  - Truncate from Sheet Border
  - Truncate The Closest Axes from Sheet Border – will ensure truncation only at axes
- Check the option *Insert Concrete Beam Schedule*
- Click **Draw** → Click a position in the drawing to insert all the beam elevation details



The **Concrete Beam Schedule** shows the beam reinforcement in tabular format (as below)

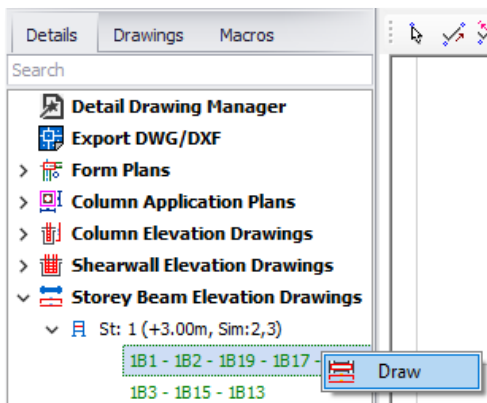
Concrete Beam Rebar Schedule (1)																
Mark	Beam			Hanger	Top Reinforcements			Bottom Reinforcements			Links			Side Bars	Remarks	
	Width (mm)	Depth (mm)	Span (mm)		Left	Center	Right	Left	Center	Right	Left	Center	Right			
1B1	250	500	5000	E1		3H13	3H16		3H13			H10-300	H10-300	H10-300		
1B2	250	500	5000	INT	3H16	3H13	3H25		3H13			H10-300	H10-300	H10-300		
1B19	250	600	7890	INT		3H25	2H16	3H25		3H16		H10-200(T)	H10-200(T)	H10-200(T)	H16	
1B17	250	500	5000	INT		3H25	3H13	3H16		3H13		H10-300	H10-300	H10-300		
1B14	250	500	5000	E2		3H16	2H13		3H13			H10-300	H10-300	H10-300		
1B3	250	500	5000	E1			3H13	3H16		3H13		H10-300	H10-300	H10-300		
1B15	250	500	5000	INT		3H16	2H13	3H16		3H13		H10-300	H10-300	H10-300		
1B13	250	500	5000	E2			3H13			3H13		H10-300	H10-300	H10-300		
1B5	250	500	5000	E1			2H13	3H16		3H13		H10-300	H10-300	H10-300		
1B4	250	500	5000	E2			3H16	3H13		3H13		H10-300	H10-300	H10-300		
1B6-1W1	250	500	5000	E1			3H13	3H20		3H13		H10-300	H10-300	H10-300		
1W1-1B12	250	500	5000	E2			3H16	3H13		3H13		H10-300	H10-300	H10-300		
1B7-1W3	250	500	5000	E1			3H13	3H20		3H13		H10-300(T)	H10-300(T)	H10-300(T)		
1W3-1B16	250	500	5000	E2			3H16	3H13		3H13		H10-300	H10-300	H10-300		
1B8-1W2	250	500	5000	E1			3H20	3H13	3H20		3H13		H10-300	H10-300	H10-300	
1W2-1B9	250	500	5000	E2			3H16	3H13	3H16		3H13		H10-300	H10-300	H10-300	
1B10	250	500	5000	E1			3H16	3H16		3H13		H10-300	H10-300	H10-300		
1B11	250	500	5000	E2			3H16	3H13		3H13		H10-300	H10-300	H10-300		
1B18	250	500	7080	SS				3H20		3H16		H10-300	H10-300	H10-300		
1B20	250	500	5000	SS				2H13		3H16		H10-300	H10-300	H10-300		

- Save the drawing File as 'Beam Elevations'

### Inserting Beam Details by Axes

If you only want to insert a particular beam axis:

- Expand the Storey ST:1



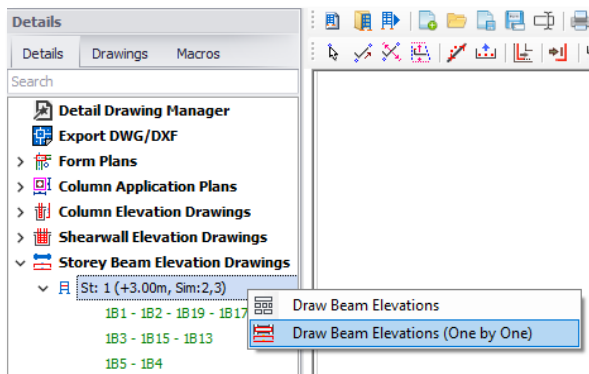
The beams will be listed along the design & detail axes, similar to how it is presented in ProtaStructure beam design.

- Select any of the beams, e.g., 1B1-1B2
- Right-click → Draw
- Click the position to insert the detail in the drawing space.

A green tick ✓ will be displayed next to the beam axes to indicate the inserted beam detail.

## Inserting Beam Details One by One

To insert the beam details of all axes of a particular storey in a batch mode:

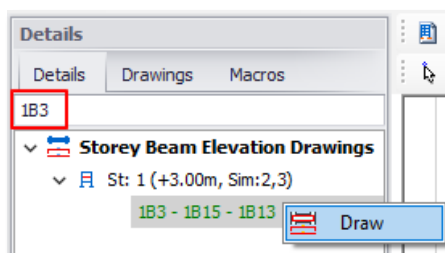


- Select **St:1**
- Right-click → **Draw Beam Elevations (one by one)**
- Click the position to insert the 1<sup>st</sup> beam detail in the drawing space
- Continue to click successively to position the other beams
- Press **Esc** to end the process prematurely

## Search a Member Detail or Text

The “**Search**” function enables you to find, filter quickly, and locate a member detail or text, such as beam 1B1.

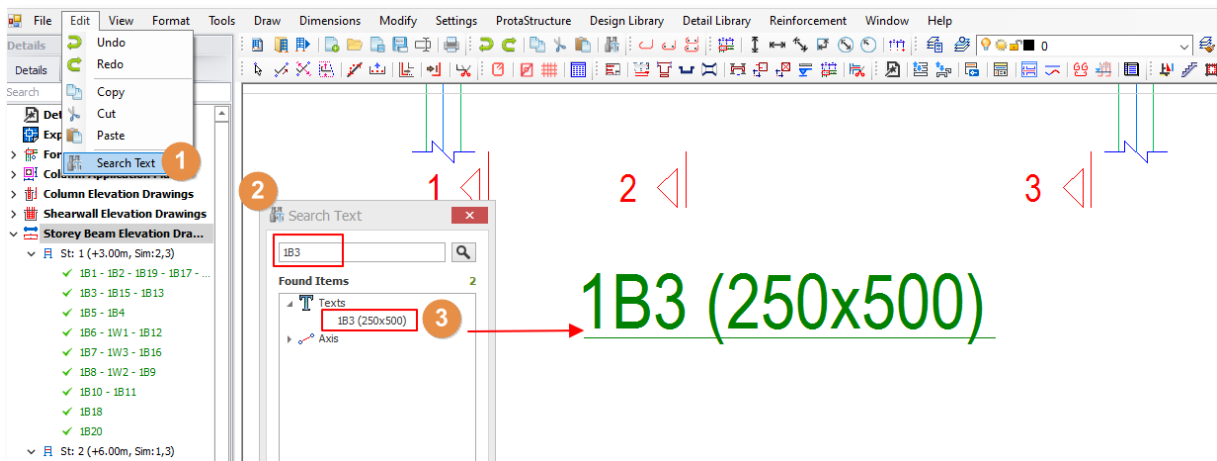
### How To Use Search in the Tree view:



- Go to the **Details** tab
- Input a member label, e.g., 1B3, in the box  
Only the details with the exact name match will be located & displayed. You can then draw out this detail only.
- Right-click → **Draw**
- This feature is handy if you only want to draw out a particular detail, not all of them.

After drawing details or objects, you can use the new text search function to locate them.

## How To Use Text Search:

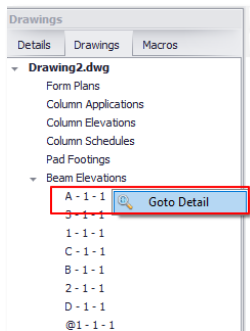


- Go to **Edit** → **Search Text** (CommandLine: SearchText)
- In the Search Text dialog, type the **text**, e.g., 1B3 → **Enter**
- **Double-Click** on the found items & they will be located & zoomed into focus

You can also use this function to search for all texts in primitive entities and intelligent objects.


## Drawings

The **Drawings** tab keeps track of various details that have been inserted and also the drawing files created. This feature will enable you to manage your project details and drawings systematically and efficiently.



- Click on the **Drawings** tab to review all the drawing files saved and what the details they contain
- Click on the triangle icon to expand or collapse the details
- Verify that all details have been inserted

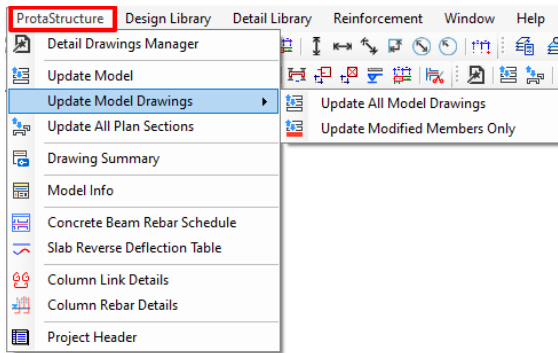
### To locate a member detail in a drawing:

- Ensure that the drawing is opened
- Locate the member by drilling down the triangle
- Right-click → **Goto Detail** 

The member detail will be located and zoomed into focus in the drawing.

## Drawing Management

There are functions to draw and update the details which are accessible from ProtaStructure tools (top menu):

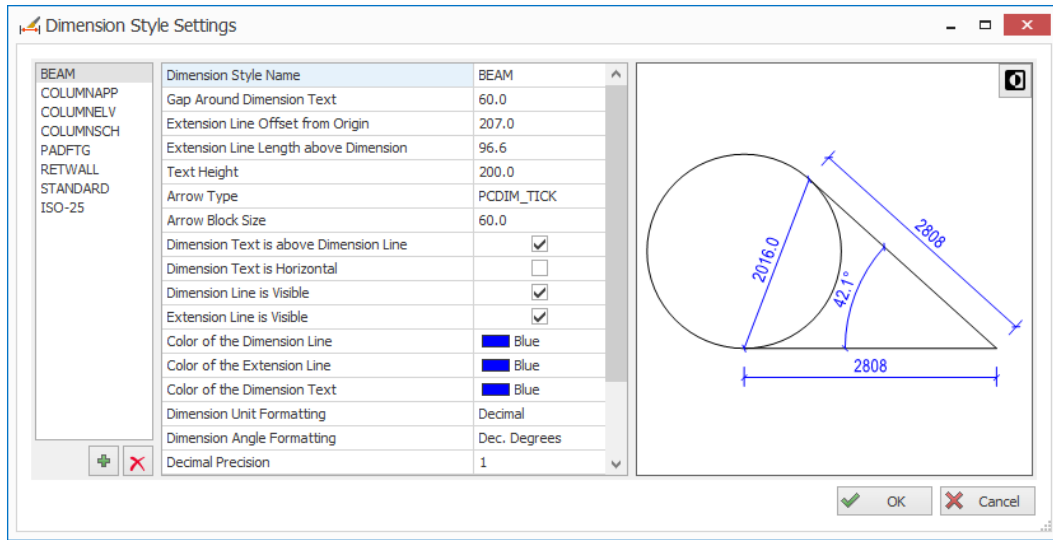


- **Update All Model Drawings** – Updates all the model drawings without checking if anything has changed in the ProtaStructure model. This operation is a forced update. All the drawn items are forced to be regenerated.
- **Update Modified Members Only** – Checks and summarizes all the members modified in ProtaStructure. If you choose to continue, you get only modified members to update.
- **Update All Plan Sections** – Updates all the sections of the plan view that are manually created.
- **Drawing Summary** – Creates a table of drawing file names and their respective detail components.
- **Model Info** – Inserts a table showing project information summary such as materials & parameters.
- **Concrete Rebar Schedule** – Inserts the concrete rebar schedule of a particular storey.
- **Column Link Details** – Draws the link details for columns & the Quantity Table.
- **Column Rebar Details** – Draws the main reinforcement column details & the Quantity Table.

## Dimension Styles Interface

Dimension styles can be edited using this interface and can be saved along with the project

- You can find it under **Formats** (top menu) → **Dimension Styles**
- All the necessary dimension styles for detail generation will come predefined
- Use “+” and “x” buttons to add/remove dimension styles
- Edit them as you wish. When you click the “OK” button, they will be saved in the project data. There is no need to save the project or drawing explicitly.

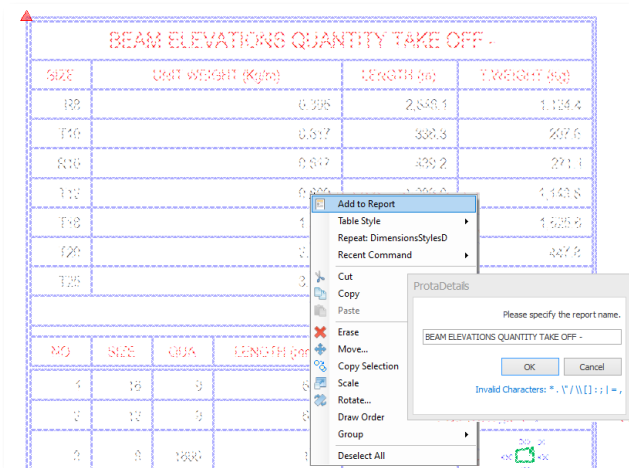


## Multiple Selection of Tables for Report Generation

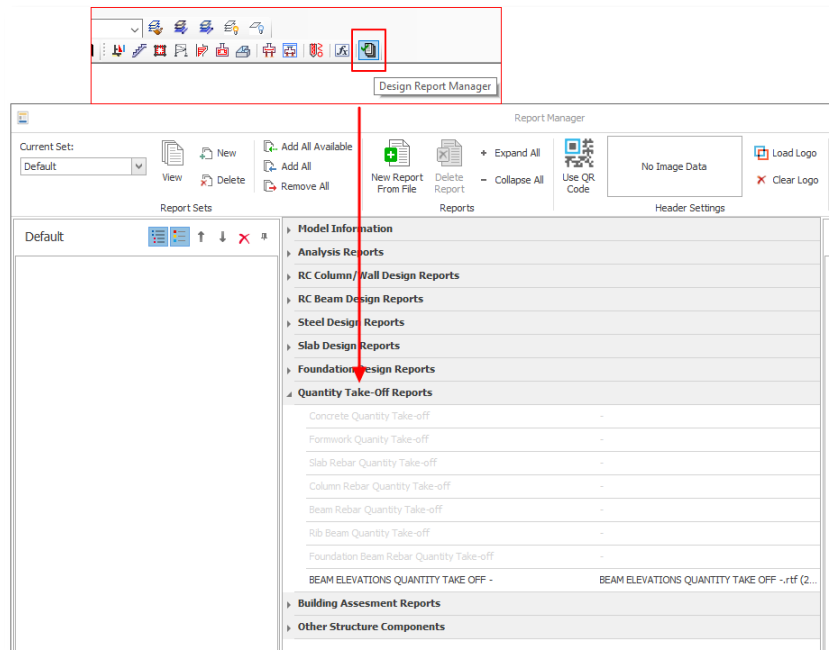
Any table drawn in ProtaDetails can be converted to a report and generated via the Report Manager.

### How To Use:

- Select a table or multiple select tables (hold down CTRL)
- Right-click → **Add to Report**
- Give it a title → **OK**
- The report will be created



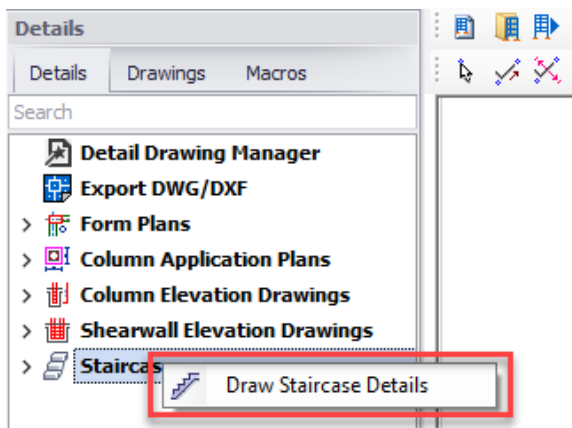
This report will also be added in **Design Report Manager** under **Quantity Take-Off Reports**.



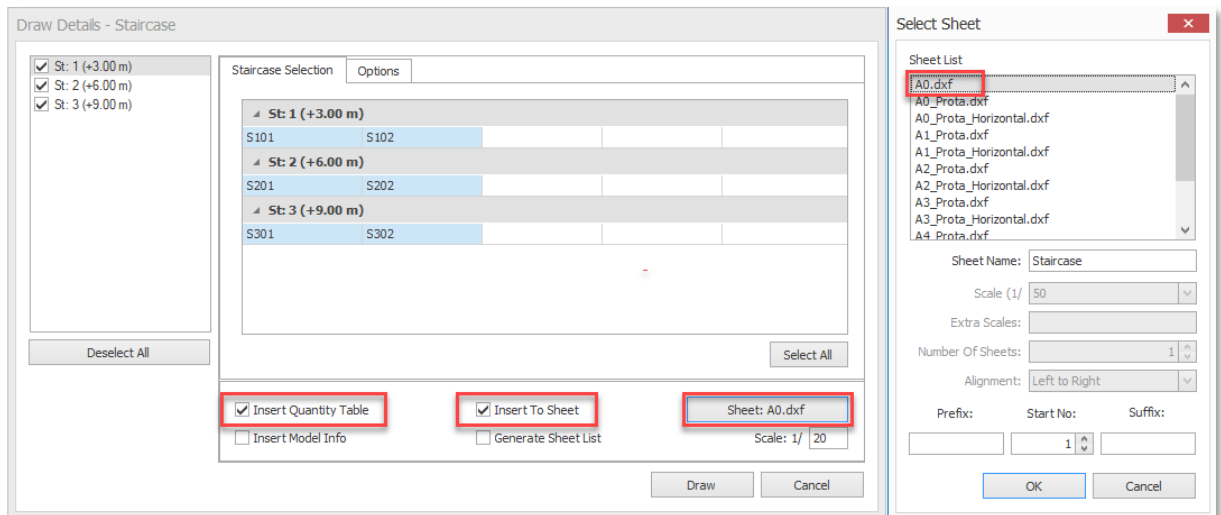
## Creating Staircase Elevation Details

We will now insert the staircase details in a new drawing.

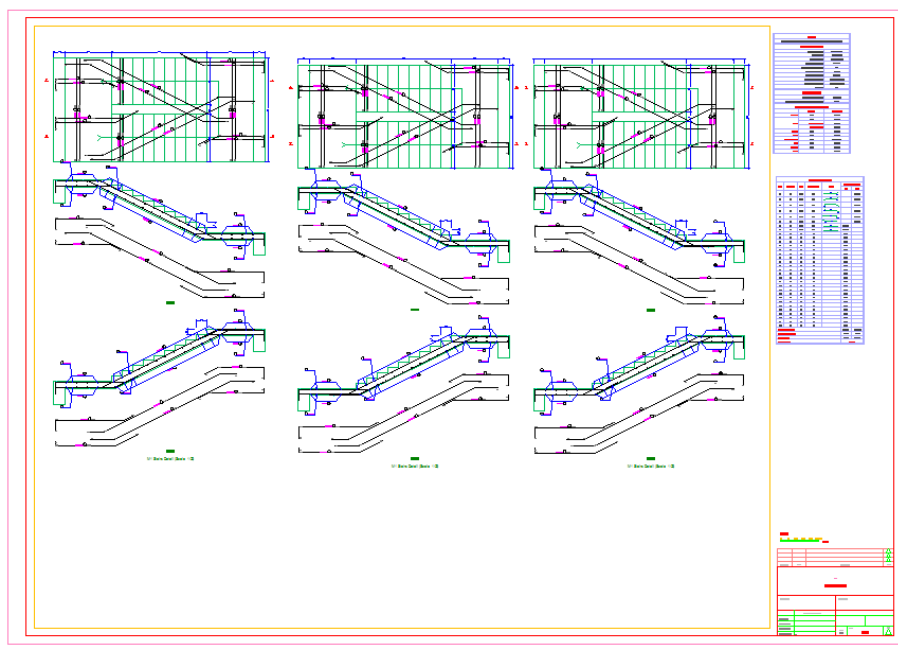
- Go to **File** (top main menu) → **New Drawing** to start a new drawing



- In the **Details** tab, → right-click on **Storey Staircase Drawings**
- Pick **Draw Staircase Details**

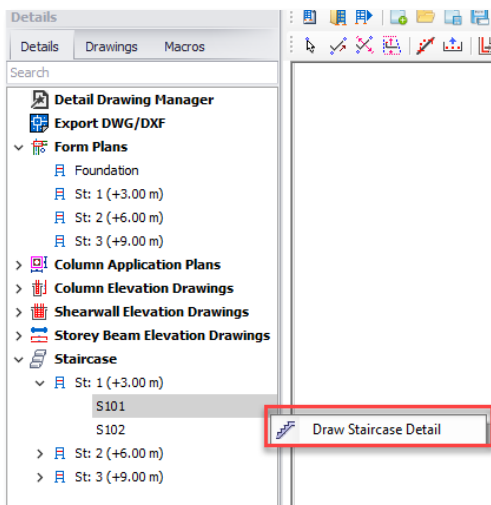


- Check the option **Insert Quantity Table** to insert the rebar quantity table in detail.
- Check **Insert to Sheet** → Pick Sheet → Choose 'A0\_Prota.dxf' in the Sheet list
- You can save your sheet in **C:\Users\User]\Documents\ProtaLib\Sheets**.
- Click **Draw** → Click a position in the drawing to insert all the staircase details



## Inserting Staircase Details One by One

To insert the staircase details of all axes of a particular storey in a one by one:

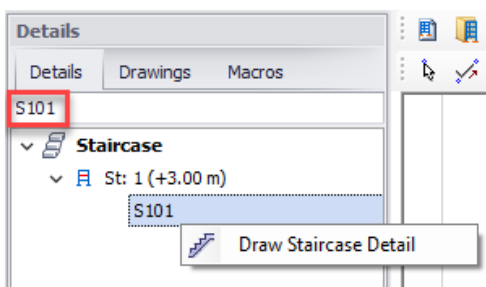


- *Select St:1*
- *Right-click → Draw Staircase Elevations (one by one)*
- *Click the position to insert the 1<sup>st</sup> staircase detail in the drawing space*
- *Continue to click successively to position the other beams*
- *Press Esc to end the process prematurely*

## Search a Member Detail or Text

The “Search” function enables you to find, filter quickly, and locate a member detail or text, such as beam S101.

### How To Use Search in the Tree view:



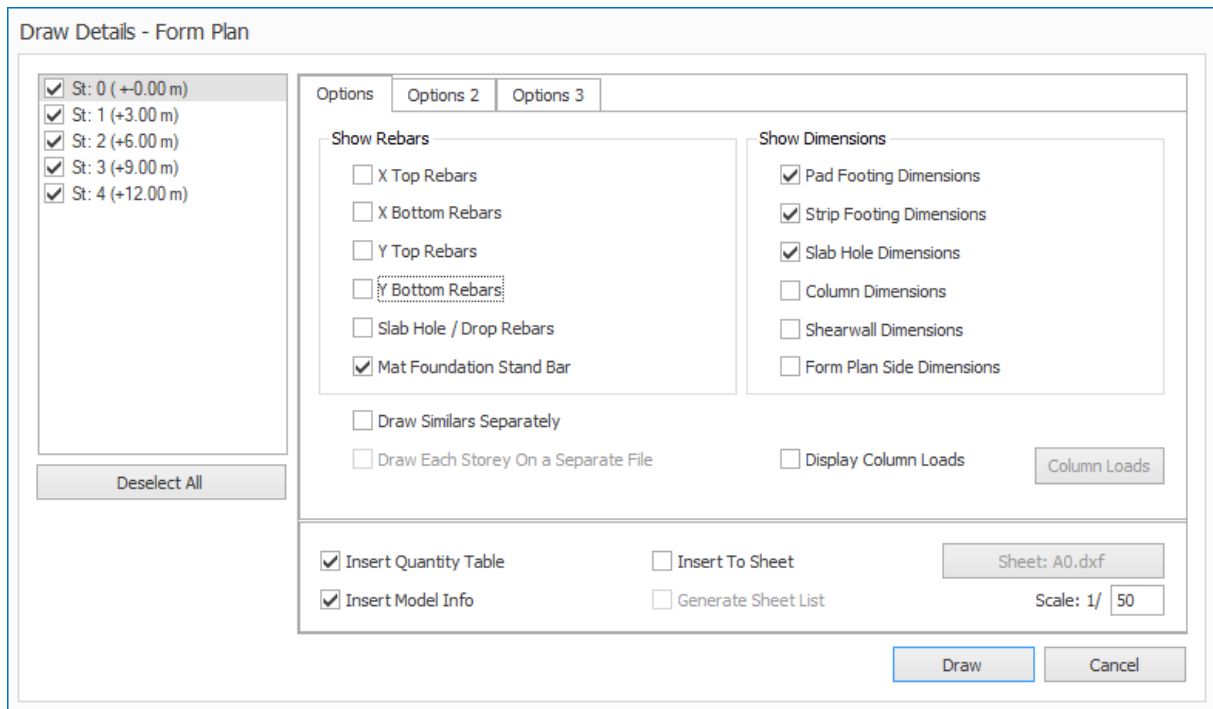
- *Go to the **Details** tab*
- *Input a member label, e.g., S101, in the box*  
Only the details with the exact name match will be located & displayed. You can then draw out this detail only.
- *Right-click → Draw*
- *This feature is handy if you only want to draw out a particular detail, not all of them.*


After drawing details or objects, you can use the new text search function to locate them.

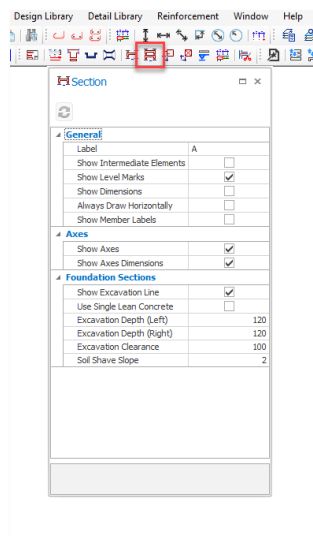
## Adding Complete Building Section to Formwork Plans

By drawing a section line from any position in Prota Details, a complete section of that section can be obtained and placed in the desired position on the sheet.

- Start ProtaDetails by going to the Drawings and Reports tab.
- Create the formwork plan in Prota Details.

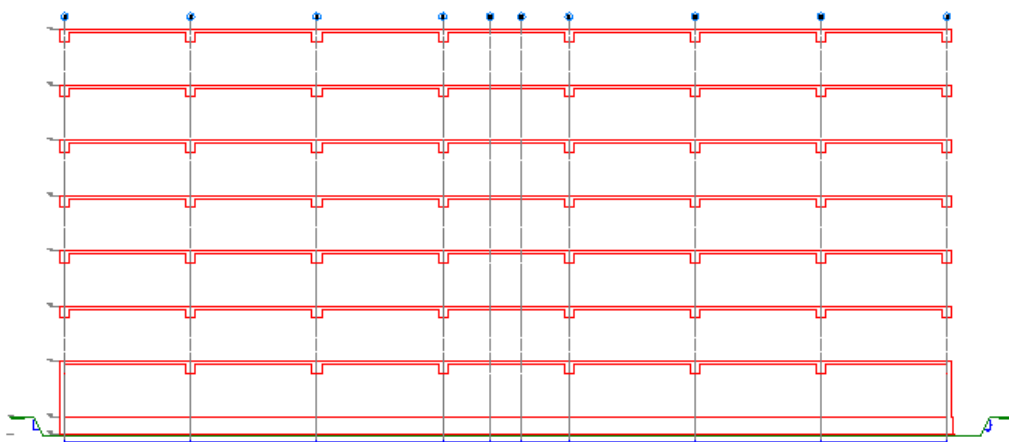


- Check the Building Section option in  Drawing Library. Also, if you type "Building Section" in the command line and press the Enter button on your keyboard, the command becomes active.



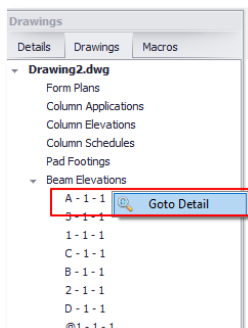
- You can make the desired settings in the section dialog box and enter values for parameters such as slope ratio, excavation distance, etc.
- Draw the section line by selecting two points in the direction you want the section to be taken and click where you want the section to be placed.

**ORTHO** Horizontal or vertical sections can be easily created by turning on the Ortho command. You can also activate the Ortho command by pressing the F8 button on your keyboard.



## Drawings


The **Drawings** tab keeps track of various details that have been inserted and also the drawing files created. This feature will enable you to manage your project details and drawings systematically and efficiently.



- Click on the **Drawings** tab to review all the drawing files saved and what the details they contain
- Click on the triangle icon to expand or collapse the details

- *Verify that all details have been inserted*

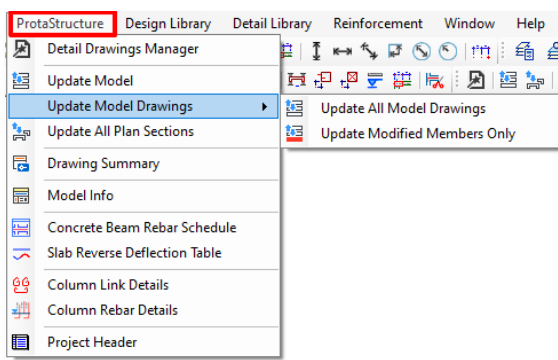
### To locate a member detail in a drawing:

- *Ensure that the drawing is opened*
- *Locate the member by drilling down the triangle*
- *Right-click → **Goto Detail*** 

The member detail will be located and zoomed into focus in the drawing.

## Drawing Management

There are functions to draw and update the details which are accessible from ProtaStructure tools (top menu):



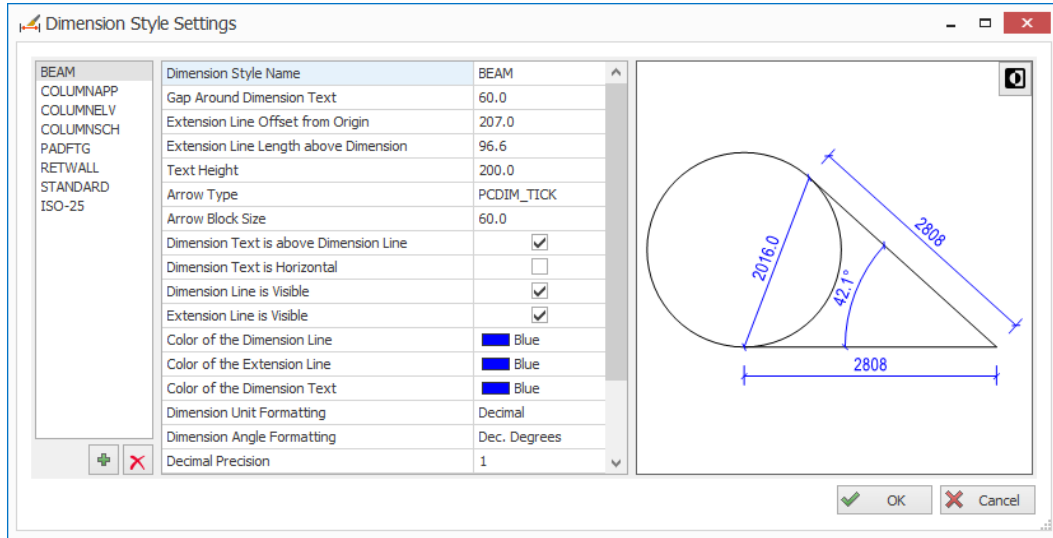
- **Update All Model Drawings** – Updates all the model drawings without checking if anything has changed in the ProtaStructure model. This operation is a forced update. All the drawn items are forced to be regenerated.
- **Update Modified Members Only** – Checks and summarizes all the members modified in ProtaStructure. If you choose to continue, you get only modified members to update.
- **Update All Plan Sections** – Updates all the sections of the plan view that are manually created.
- **Drawing Summary** – Creates a table of drawing file names and their respective detail components.
- **Model Info** – Inserts a table showing project information summary such as materials & parameters.
- **Concrete Rebar Schedule** – Inserts the concrete rebar schedule of a particular storey.
- **Column Link Details** – Draws the link details for columns & the Quantity Table.
- **Column Rebar Details** – Draws the main reinforcement column details & the Quantity Table.

## Dimension Styles Interface

Dimension styles can be edited using this interface and can be saved along with the project

- *You can find it under **Formats** (top menu) → **Dimension Styles***

- All the necessary dimension styles for detail generation will come predefined
- Use “+” and “x” buttons to add/remove dimension styles
- Edit them as you wish. When you click the “OK” button, they will be saved in the project data. There is no need to save the project or drawing explicitly.

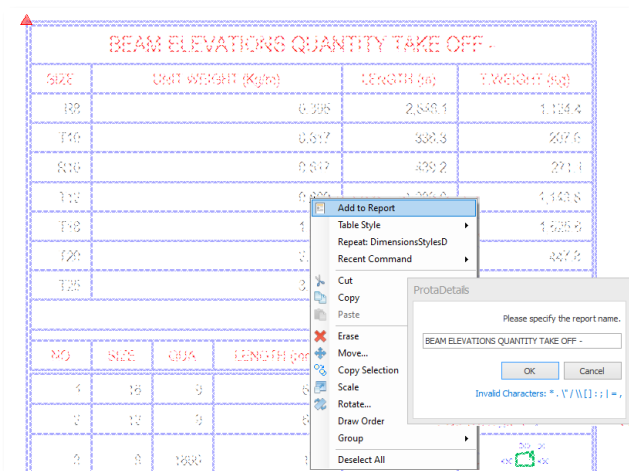


## Multiple Selection of Tables for Report Generation

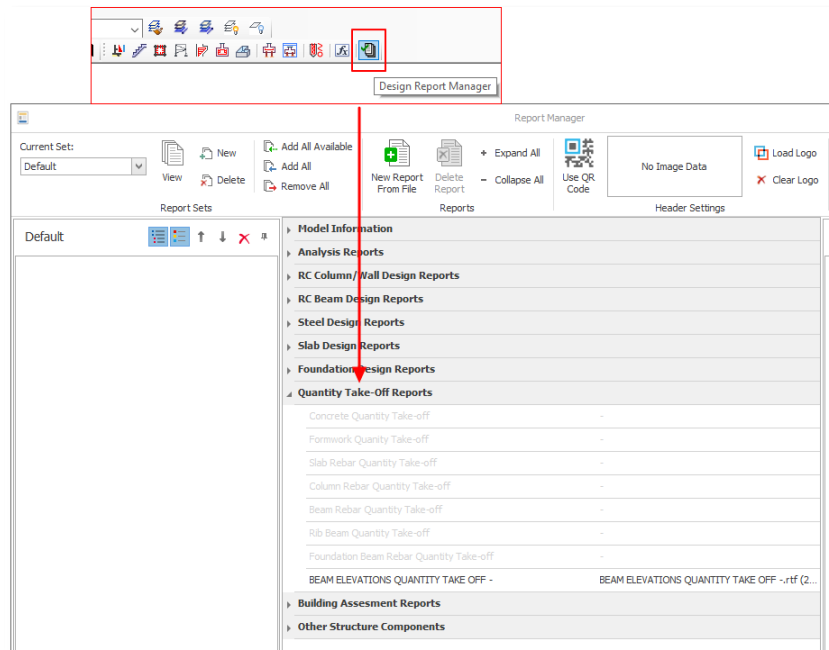
Any table drawn in ProtaDetails can be converted to a report and generated via the Report Manager.

### How To Use:

- Select a table or multiple select tables (hold down CTRL)
- Right-click → **Add to Report**
- Give it a title → **OK**
- The report will be created



This report will also be added in **Design Report Manager** under **Quantity Take-Off Reports**.



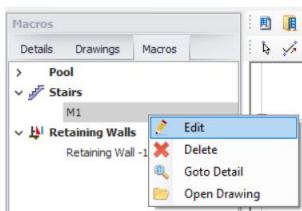
## Engineering Design Libraries

Structural components design & detailing are available via Design Libraries (top menu):

- Cantilever Retaining Wall
- Pile Cap
- Pile Design
- Engineering Utilities
- Stairs
- Corbel
- Pool
- Engineering Utilities for quick engineering design & calculation

These powerful engineering modules provide a full calculation report, detail drawings, and quantities.

After running the design libraries, close the module and click anywhere in the empty drawing to insert the detail & the quantity table (if applicable). The macros will then be added in the **Macros** tab.



If you right-click on a macro, additional options are to **Edit, Delete, Goto Detail & Open Drawing** directly.

**Save** the drawing to ensure the engineering macros are retained when the drawing is closed.

These engineering libraries will be expanded continually to cater to your engineering needs. Kindly feedback to us if you have any ideas for engineering libraries.

## Cantilever Retaining Wall

**Retaining Wall**

Wall Label: Retaining Wall -1

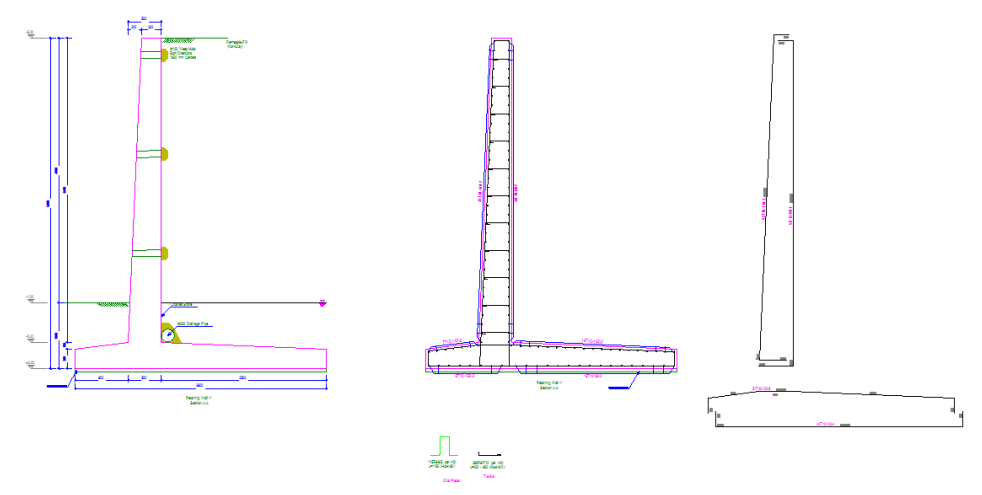
**Inputs**

Wall Height	h	5000.00 mm
Casting Height (Number Of Casts: 1)		5000.00 mm
Wall Length	l	6000.00 mm
Stem Top Width (From Left)	a	300.00 mm
Eccentricity From Left	e	200.00 mm
Base Plate Front Length	b1	800.00 mm
Stem Bottom Width	b2	500.00 mm
Base Plate Back Length	b3	2500.00 mm
Stem Front Face Slope Angle		2.50 °
Stem Back Face Slope Angle		0.00 °

**Dynamic Model View**

**Analysis Result Summary**

	Overturning Safety	Sliding Safety	σ-Max (& N/m <sup>2</sup> )	σ-Min (& N/m <sup>2</sup> )	Total Failure	Stability analyses are successful!
Non-Seismic	19.062 ≥ 1.000 ✓	2.527 ≥ 1.000 ✓	84.735 < 200.000 ✓	71.692 > -1.000 ✓	1.50 > 1.00 ✓	Design must be renewed!
Seismic	8.135 ≥ 1.000 ✓	2.087 ≥ 1.000 ✓	101.551 < 200.000 ✓	54.876 > -1.000 ✓		



### Input and Options

This tab control can select geometry, soil parameters, analysis options, and loadings. The whole design process will progress by setting fields and options in the tabs.

### Dynamic Model View

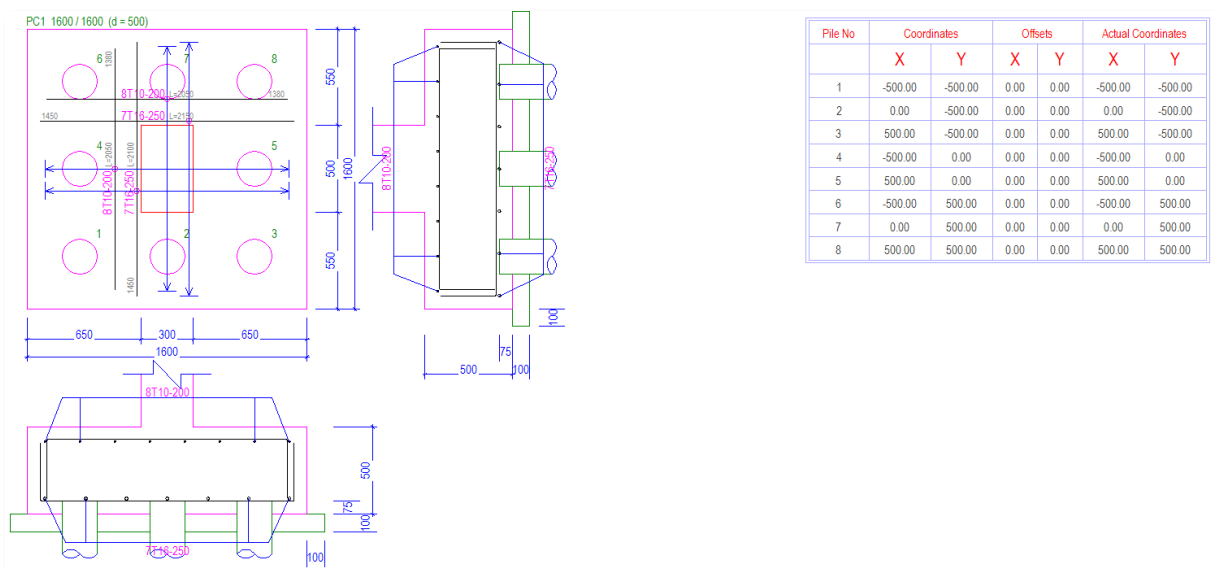
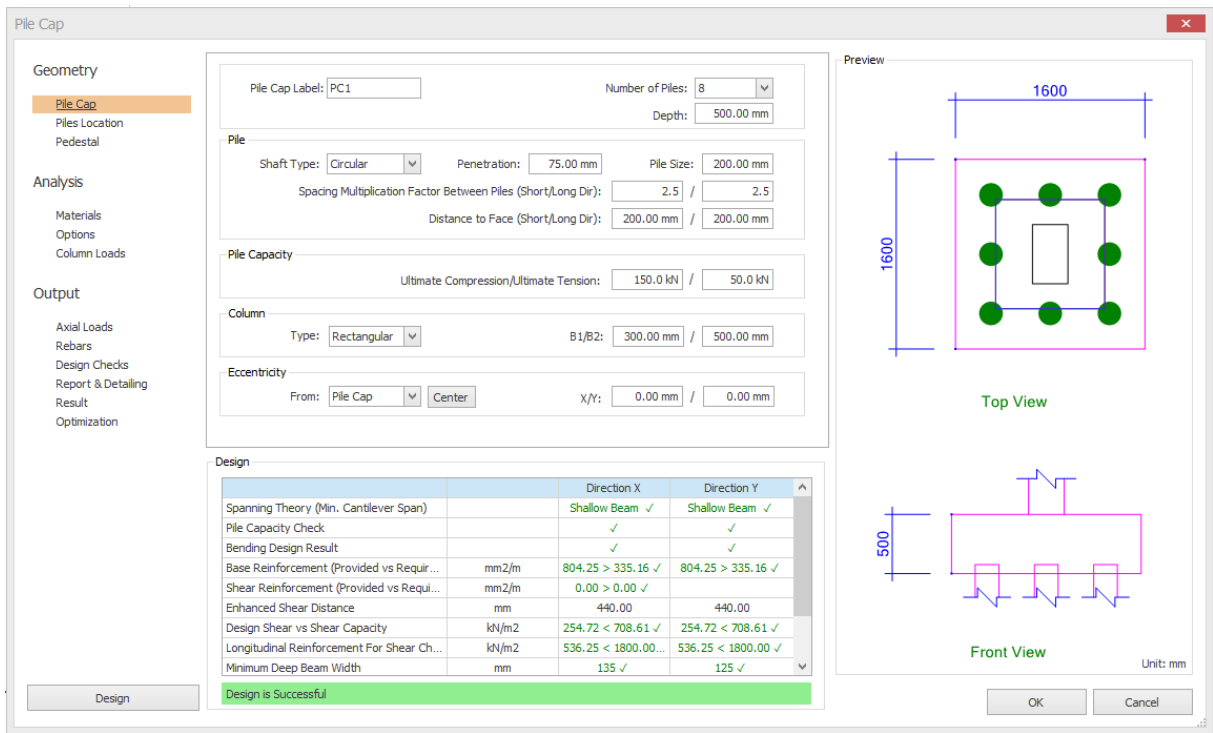
A dynamic view of the retaining wall section is displayed in this field. Any changes in input will immediately update this image

### Analysis Result Summary

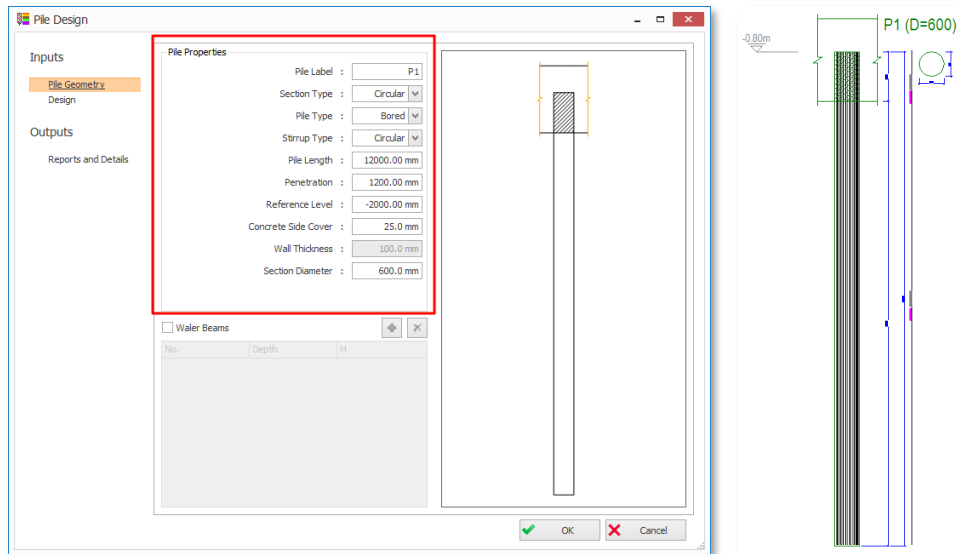
Summary of overturning safety, sliding safety, total failure, and soil bearing capacity checks are displayed for seismic (EQ) and non-seismic (non-EQ) scenarios. They update automatically along with any changes in the input.

# Pile Cap

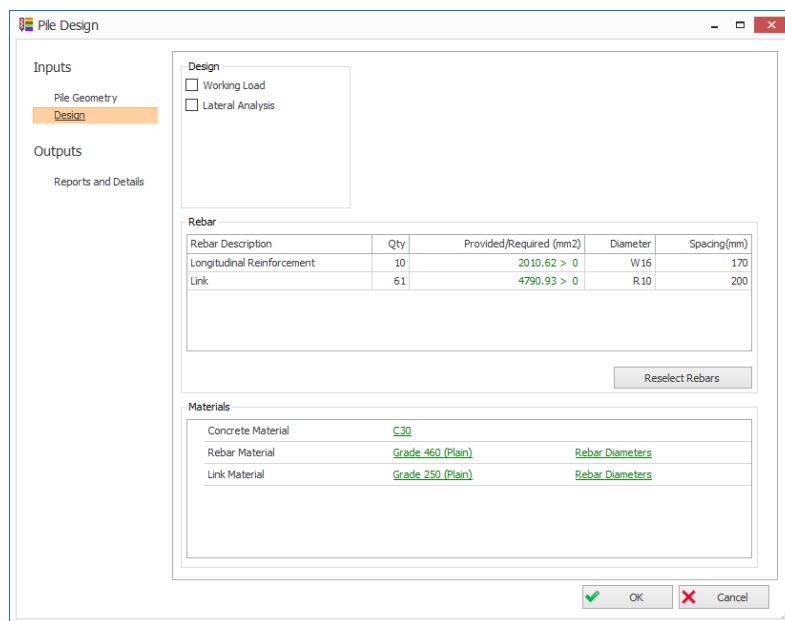
The pile cap design library in ProtaDetails is similar to the pile cap design module in ProtaStructure.



## Pile Design



- In the **Pile Geometry** tab, input all the parameters such as Circular/ Square/ Rectangular, size, length, etc.

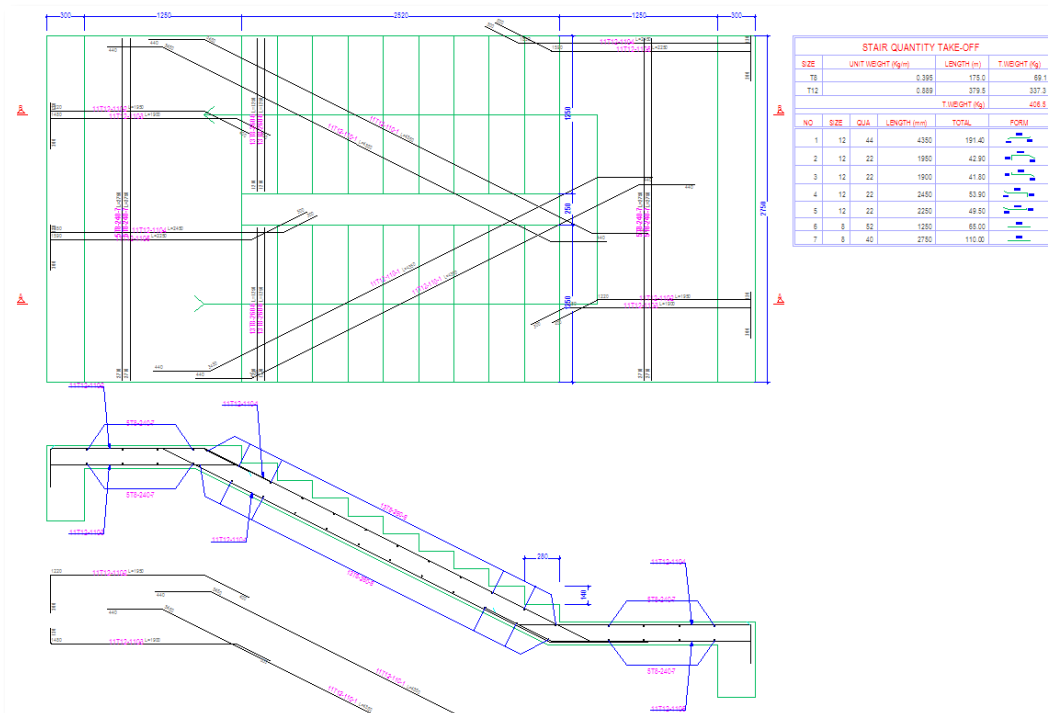
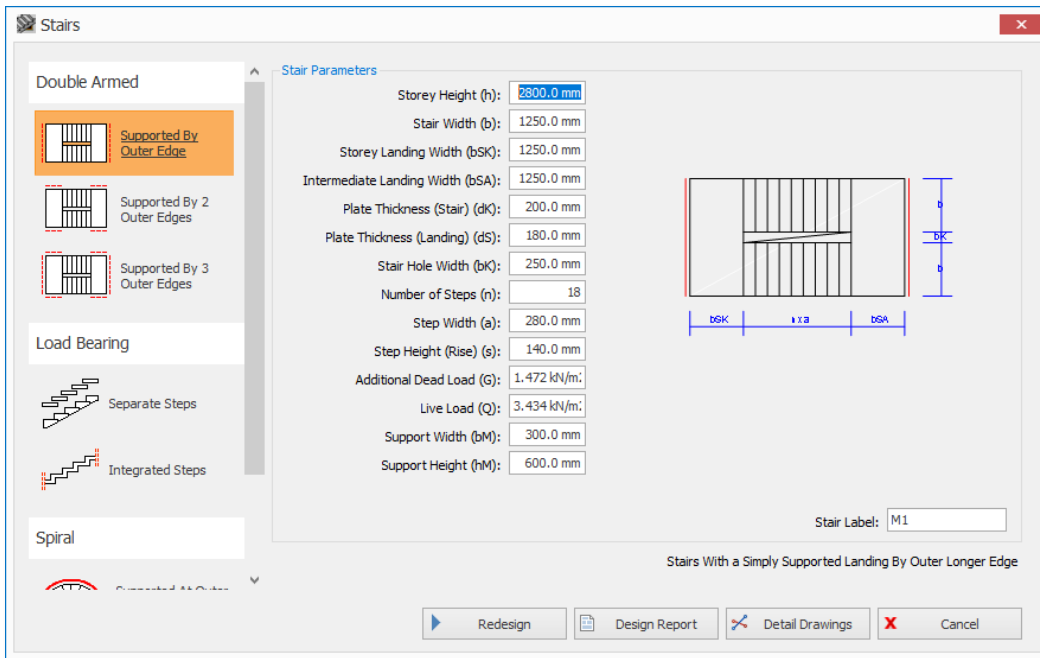


- You can specify concrete grade, rebar, and link grades & diameters in the **Design** tab.
- The **Main Reinforcement & Stirrup (links)** can be defined.
- Click **OK** (on the right bottom of the Pile Design dialog) > Pick and insertion point on the drawing to insert the pile details.

The defined material and rebars will be used for generation of pile details, calculations of pile allowable structural capacity, and lateral analysis.

Stairs

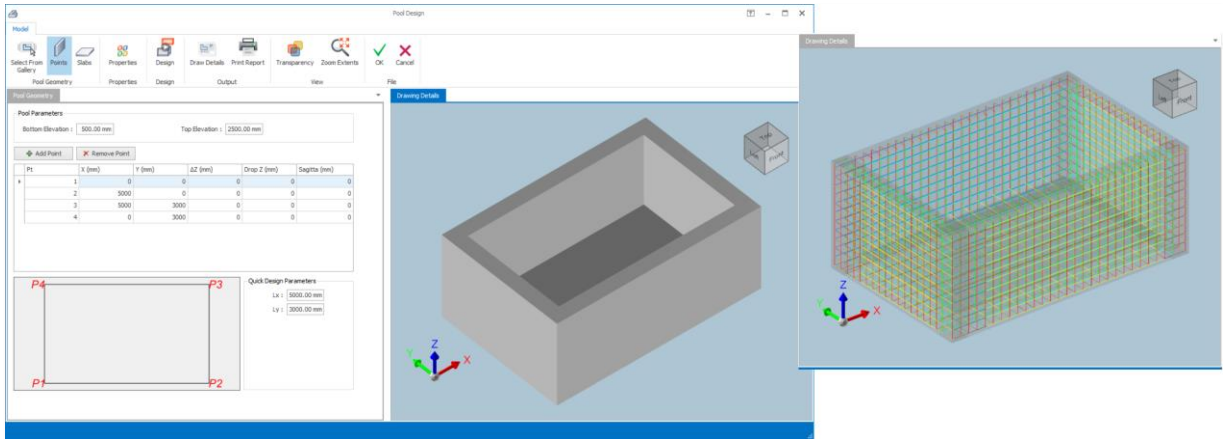
Design



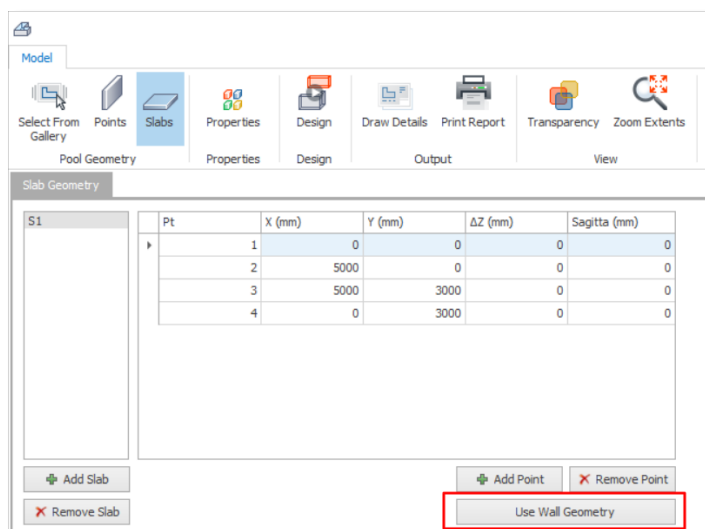
- Input stair parameters in the input fields and click **Redesign** to view the stair design results.
- Users can generate a **Design Report** for more detailed analysis results, such as bending moment values, deflection check, section forces, etc.

## Pool Design

The Pool Design can be used to analyze, design, and detail pools or tanks of various shapes and sizes. You define different soil profiles surrounding the pool walls and apply various surcharge loads on the soil.



- *Select from Gallery*
  - Select the type of pool for the choices provided.
- *Points: Defines the characteristic & shape of the walls of the tank*
  - Enter bottom & top elevation of the tank. The difference is the tank depth.
  - **Points table:** Define the bottom joint coordinates of each tank wall—also, the curvature.
- *Slabs: Defines the characteristic & shape of the bottom slab(s) of the tank*
  - **Points table:** Define the bottom joint coordinates of each slab—also, the edge curvature.
  - For the pool slab, clicking **Use Wall Geometry** would automatically set the slab's geometry the same as wall geometry.



- **Properties:** Define material, code, soil model & surcharge loads.
  - **Material:** Choose Concrete grade, rebar grade & diameter for design
  - **Settings:** Choose the design code & parameters
  - **Soil Model:** Choose active or passive load side, long or short-term load, water table level, etc
  - **Soil Profile:** Define the soil profile & layers
  - **Surcharge:** Input surcharge loads (point, line, strip & surface load)
  - **Results & Report:** Print & review the analysis results of the walls, e.g., active pressure & forces
- **Design:** Design the wall tank (base slab is not designed, rebars is user-defined) :
  - Change the wall & slab thickness & click **Renew Rebar Design** (if the first round of design fails)
  - Pick load cases to consider, e.g., post-construction, operations, maintenance & earthquake
- **Draw Details:** Draw the reinforcement details in including plan and cut sections.
- **Print Report:** Print the entire pool reporting, including geometer, analysis, and design.
- **Transparency:** Shows the reinforcement in 3D.
- **Zoom Extent:** Zoom to the extent of the diagram
- **OK:** Click OK to exit and place the detail drawing into the currently opened drawing.

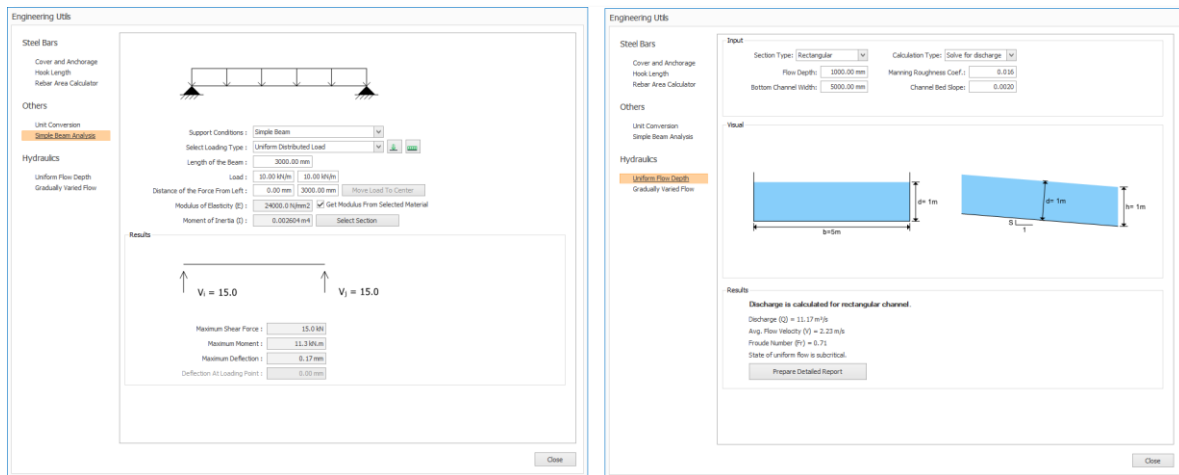
Before performing pool design, soil model must be assigned to the walls in **Properties** tab.  
 Base slab design is out of the scope of program; the rebars are user-defined.

## Engineering Utilities for quick engineering design & calculation

The handy Engineering Utilities can be used for a quick engineering design. This tool includes a calculator for concrete cover, rebar anchorage & lap lengths; a simple beam analysis tool to calculate maximum shear, moment, and deflections; a hydraulics calculator for uniform flow depth & gradually varied flow, etc.

### How to Use:

- Go to Design Library (top drop-down menu) → **Engineering Utilities**



The following is the complete list of the modules and their functions:

- **Cover and Anchorage Calculator**
  - Calculates concrete cover, anchorage, and lap lengths.
- **Hook Length Calculator**
  - Calculates rebar bending, extension & total hook length.
- **Rebar Area Calculator**
  - Calculates provided steel area per meter (e.g., 10H16 @ 100mm spacing) based on required steel area.
- **Unit Conversion**
  - Converts common engineering units, e.g., Pascal (Pa) → Kilo pound Per Square Inch (KSI).
- **Simple Beam Analysis**
  - Calculates maximum shear, moment & deflection for a single-span beam with various support conditions such as simple, cantilever & fixed end.
- **Uniform Flow Depth (Hydraulics)**
  - Solves for discharge, flow depth, channel width, or channel slope for rectangular, trapezoidal, or circular channels under 'uniform flow depth' condition.
- **Gradually Varied Flow (Hydraulics)**
  - Solves for discharge, flow depth, channel width, or channel slope for rectangular, trapezoidal, or circular channels.

## Closing Summary

Congratulations! You have completed your first automated detailing & general arrangement drawings production & management project in **ProtaDetails**.

In this Quick Start Guide, you had first-hand experience of how easy it is to create all the detail reinforcement & layout drawings of the project model you first started in **ProtaStructure**. You also discovered how the engineering component design libraries (such as the retaining wall) enable you to efficiently produce comprehensive analysis & design reports and detail reinforcement drawings with quantity take-off.

We recommend you go through the **What's New** document on the new and enhanced features of ProtaDetails.

ProtaDetails includes many more powerful detailing features, such as intelligent rebar objects. For more help and guidance, please refer to the help reference accessible from the Help menu.

Alternatively, you can attend our training courses to obtain a more in-depth knowledge of the software usage. Please visit our website [www.protasoftware.com](http://www.protasoftware.com) for more information.

## Thank You

Thank you for choosing the **Prota**Structure Suite product family.

Our top priority is to make your experience excellent with our software technology solutions.

Should you have any technical support requests or questions, please do not hesitate to contact us at all times through [globalsupport@protasoftware.com](mailto:globalsupport@protasoftware.com) and [asiastsupport@protasoftware.com](mailto:asiastsupport@protasoftware.com)

Together with our responsive technical support team, our dedicated online support center is available to help you get the most out of **Prota**'s technology solutions.

The Prota Team

